

6-2010

Behavioural Display Systems Across Nine *Anolis* Lizard Species: Sexual Dimorphisms in Structure and Function

Michele A. Johnson

Trinity University, mjohnso9@trinity.edu

J. Wade

Follow this and additional works at: https://digitalcommons.trinity.edu/bio_faculty

Part of the [Biology Commons](#)

Repository Citation

Johnson, M.A., & Wade, J. (2010). Behavioural display systems across nine *Anolis* lizard species: sexual dimorphisms in structure and function. *Proceedings of the Royal Society, B*, 277(1688), 1711-1719. doi:10.1098/rspb.2009.2323

This Article is brought to you for free and open access by the Biology Department at Digital Commons @ Trinity. It has been accepted for inclusion in Biology Faculty Research by an authorized administrator of Digital Commons @ Trinity. For more information, please contact jcostanz@trinity.edu.

Behavioural display systems across nine *Anolis* lizard species: sexual dimorphisms in structure and function

Michele A. Johnson and Juli Wade

Proc. R. Soc. B 2010 **277**, 1711-1719 first published online 3 February 2010
doi: 10.1098/rspb.2009.2323

Supplementary data

["Data Supplement"](#)

<http://rsob.royalsocietypublishing.org/content/suppl/2010/01/28/rspb.2009.2323.DC1.html>

References

[This article cites 46 articles, 6 of which can be accessed free](#)

<http://rsob.royalsocietypublishing.org/content/277/1688/1711.full.html#ref-list-1>

Subject collections

Articles on similar topics can be found in the following collections

[neuroscience](#) (312 articles)

[behaviour](#) (1195 articles)

[evolution](#) (1611 articles)

Email alerting service

Receive free email alerts when new articles cite this article - sign up in the box at the top right-hand corner of the article or click [here](#)

To subscribe to *Proc. R. Soc. B* go to: <http://rsob.royalsocietypublishing.org/subscriptions>

Behavioural display systems across nine *Anolis* lizard species: sexual dimorphisms in structure and function

Michele A. Johnson^{1,2,*} and Juli Wade^{2,3}

¹Department of Biology, Trinity University, One Trinity Place, San Antonio, TX 78212, USA

²Department of Zoology, Michigan State University, 203 Natural Science Building, East Lansing, MI 48824, USA

³Department of Psychology and Neuroscience Program, Michigan State University, 108 Giltner Hall, East Lansing, MI 48824, USA

Relationships between structure and function are a primary focus in biology, yet they are most often considered within individual species. Sexually dimorphic communication behaviours and the morphology of associated structures can vary widely, even among closely related species, and these traits provide an ideal opportunity to investigate the evolution of structure–function patterns. Using nine *Anolis* lizard species, we addressed a series of questions regarding sex differences in and the evolution of relationships between extension of the throat fan (dewlap) and morphology of the muscles and cartilage controlling it. The main results indicated that within species, males displayed the dewlap more often than females and consistently exhibited larger associated structures. These data are consistent with work in other vertebrates in which corresponding sex differences in reproductive morphology and behaviour have been documented. Across species, however, we found no evidence that the rate of dewlap extension evolved in association with dewlap morphology. Thus, we provide an example of traits that, when considered in a phylogenetic framework, exhibited limited associations between behaviour and morphology, perhaps as the result of constraints imposed by the ecological contexts in which different species occur.

Keywords: communication; dewlap; morphology; neuromuscular traits; phylogeny

1. INTRODUCTION

The vast diversity of communication behaviours and the morphology of structures associated with them provide an ideal opportunity to study mechanistic relationships between structure and function across animal taxa. Approaches that have been especially valuable in elucidating structure–function relationships include comparisons between males and females (e.g. Nottebohm & Arnold 1976; Breedlove & Arnold 1980) and for seasonally breeding animals, comparisons within sexes between times of reproductive activity and quiescence (e.g. Ball *et al.* 2004). Most mechanistic studies have explored these relationships within a single species, with the majority using model rodent or songbird species (reviewed by Cooke *et al.* 1998).

Exceptions to these single-species studies exist, however, including particularly intriguing examples from songbirds (MacDougall-Shackleton & Ball 1999; Brenowitz & Beecher 2005). Evolutionary relationships exist between measures of song complexity and the volumes of forebrain song nuclei (Devoogd *et al.* 1993; Székely *et al.* 1996; Brenowitz 1997). Similarly, associations between vocalizations and morphological features of the peripheral vocal organ are exhibited in diverse avian species (Suthers *et al.* 1999; Suthers & Zollinger 2004).

Research to date has provided extremely valuable information on the interactions among neural and

endocrine traits and behaviour. Yet, to determine the generality of structure–function patterns in communication, it is necessary to examine these patterns in additional taxa. In this study, we took advantage of diversity in a sexually dimorphic display behaviour across a group of lizards. Using species in the genus *Anolis* (anoles), we investigated the evolution of the muscles and cartilage that support the extension of a colourful gular fan (dewlap). This structure is displayed when the ceratohyoid (CH) muscles on each side of the throat contract, causing the second ceratobranchial cartilage (hereafter ‘cartilage’) to extend (Wade 2005). In the vast majority of anole species, the dewlap is substantially larger in males than in females, and it is used frequently by males (but infrequently by females) during courtship and aggression (Jenssen 1977). It may also be used to deter pursuit by predators (Leal & Rodriguez Robles 1997) or in species recognition (Nicholson *et al.* 2007). Pronounced variation in dewlap size and use exists among anole species, as well as in the degree of sexual dimorphism in both structure and function, suggesting that the muscle and cartilage involved in dewlap extension may vary among and within species as well.

The only anole in which relationships between dewlap extension and morphology of these dewlap components has been investigated is *A. carolinensis*, a species used extensively in laboratory studies. These animals have been the focus of behavioural studies since the 1880s (Monks 1881), and detailed descriptions of the neural, endocrine and muscular components that influence dewlap extension are available (Wade 2005). In this

* Author for correspondence (michele.johnson@trinity.edu).

Electronic supplementary material is available at <http://dx.doi.org/10.1098/rspb.2009.2323> or via <http://rspb.royalsocietypublishing.org>.

species, two lines of evidence suggest that associations exist between dewlap structure and function. First, numerous features of the mechanical system that extends the dewlap (including muscle fibre size, cartilage length and motoneuron somata) are larger in males, which display often, compared with females, which do not (O'Bryant & Wade 1999). Second, the rate of dewlap extension is positively correlated with CH fibre size in adult male anoles (Neal & Wade 2007). However, evolutionary relationships between dewlap use and the musculature and cartilage that support this structure have not yet been examined.

Anoles are an excellent system for this type of analysis. Approximately 400 species exist in the genus *Anolis*, exhibiting extensive variation in a broad range of morphological, ecological and behavioural traits (Losos 2009). Many species of anoles are readily observed in the field, and individuals of both sexes perform easily quantified, sex- and species-specific display behaviours. Also, the existence of a robust anole phylogeny (Nicholson *et al.* 2005) allows for the investigation of evolutionary relationships between structural and functional traits far more rigorously than is possible within *A. carolinensis* (or other single-species model systems).

In this study, we examined dewlap-associated morphological traits across nine species of anoles that display a range of dewlap size and use (figures 1 and 2). Geographical and taxonomic sampling were focused around two species that exhibit relative sexual monomorphism in dewlap size: *A. valencienni* from Jamaica, in which both sexes have substantial dewlaps (Hicks & Trivers 1983), and *A. bahoruocoensis* from the Dominican Republic, in which both sexes have diminutive dewlaps (Fitch & Henderson 1987; Orrell & Jenssen 1998). We also studied two additional Jamaican species, four other species from the Dominican Republic, and *A. carolinensis* from the southeast US, all of which show varying degrees of greater sexual dimorphism than *A. bahoruocoensis* and *A. valencienni*. In each species, we measured cartilage length and cross-sectional area, area of CH muscle fibres and CH muscle height. We also measured snout-vent length (SVL) and mass as controls for body size. We used cross-sectional areas of the trachea and the fibres of the genioglossus (GG; a muscle involved in tongue extension) as procedural controls; they were measured in the same tissue sections as the dewlap-associated traits, but are not involved in dewlap extension.

We addressed four questions regarding structure-function relationships. First, we examined whether consistent differences exist among species and between sexes. Second, we used behavioural data on dewlap use, primarily from Johnson (2007), to determine whether the rate of dewlap extension has evolved in association with dewlap morphology. Third, we asked whether sexual dimorphism in morphological traits has evolved in association with sexual dimorphism in dewlap use. Finally, we examined relationships among the evolution of the morphological traits themselves.

2. MATERIAL AND METHODS

(a) Morphology

We collected specimens of three species from the north central coast of Jamaica: *A. grahami* and *A. lineatopus* from the grounds

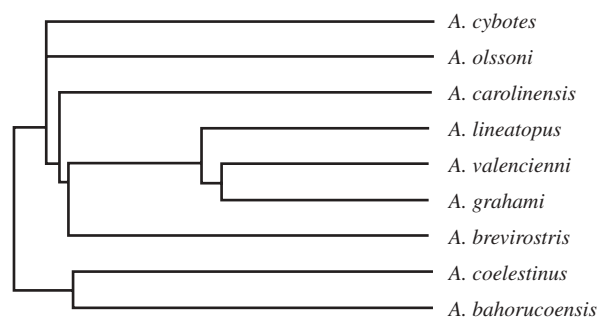


Figure 1. Phylogenetic relationships among species. Ultrametric tree from the phylogeny in Nicholson *et al.* (2005), pruned to include only the species in this study.

of Circle B Farm in Priory (18°26.104' N, 77°14.469' W), and *A. valencienni* from the grounds of Discovery Bay Marine Laboratory in Discovery Bay (18°28.14' N, 77°24.90' W). In southwest Dominican Republic, we obtained specimens of five species: *A. brevirostris*, *A. coelestinus*, *A. cybotes* and *A. olssoni* on the grounds of Coralsol Beach Resort near Bauruco (18°03.45' N, 71°06.75' W), and *A. bahoruocoensis* near the montane town of Polo (18°07.59' N, 71°16.12' W). We collected *A. carolinensis* from the Barataria Preserve of Jean Lafitte National Historical Park in Marrero, LA, USA (29°47.22' N, 90°06.53' W). All specimens were captured during the *Anolis* summer breeding season.

We captured all animals (10–11 females and 11–13 males per species) by noose or hand between 08.00 and 18.30 h, except *A. valencienni*, *A. bahoruocoensis* and *A. olssoni*, which we caught between 21.15 and 01.00 h or 04.30 and 06.00 h while they were sleeping. We placed each individual in an air-filled plastic bag until processing.

We measured SVL, mass and length of the cartilage under the dewlap. Animals were then rapidly decapitated (average time from capture to euthanasia = 82 min), and a portion of the throat including the CH muscles was immediately frozen on dry ice. Tissues were transported on dry ice to Michigan State University and stored at –80°C. At the time of tissue collection, we confirmed that each animal was in breeding condition. Each male had large, vascularized testes, and each female had at least one yolking follicle and/or oviductal egg.

We sectioned frozen throat tissues at 20 µm and stained the tissues with haematoxylin and eosin. Using Scion (NIH) IMAGE software, we measured the cross-sectional area of 25 arbitrarily selected fibres in the CH and GG muscles (following O'Bryant & Wade 1999; Neal & Wade 2007). Values were obtained from both the left and right sides within the middle third of the rostral-caudal extent of the muscle. We quantified the cross-sectional area of cartilage and trachea, as well as CH height (estimated by the minor axis of the ellipse that best approximates the muscle shape) in five tissue sections in the middle third of the muscles. Statistical analyses employed an average of each measure for each individual.

To determine whether the species differ in qualitative aspects of throat morphology, we examined preserved specimens of one adult male and female of each species. These specimens were borrowed from the Museum of Comparative Zoology and were collected between *ca* 1953 and 1983 near our collection sites. To confirm the presence of all muscle and cartilage components of the dewlap extension system, we carefully peeled back the skin at the throat, visually examined the tissues underneath and exposed the cartilage for photographs.

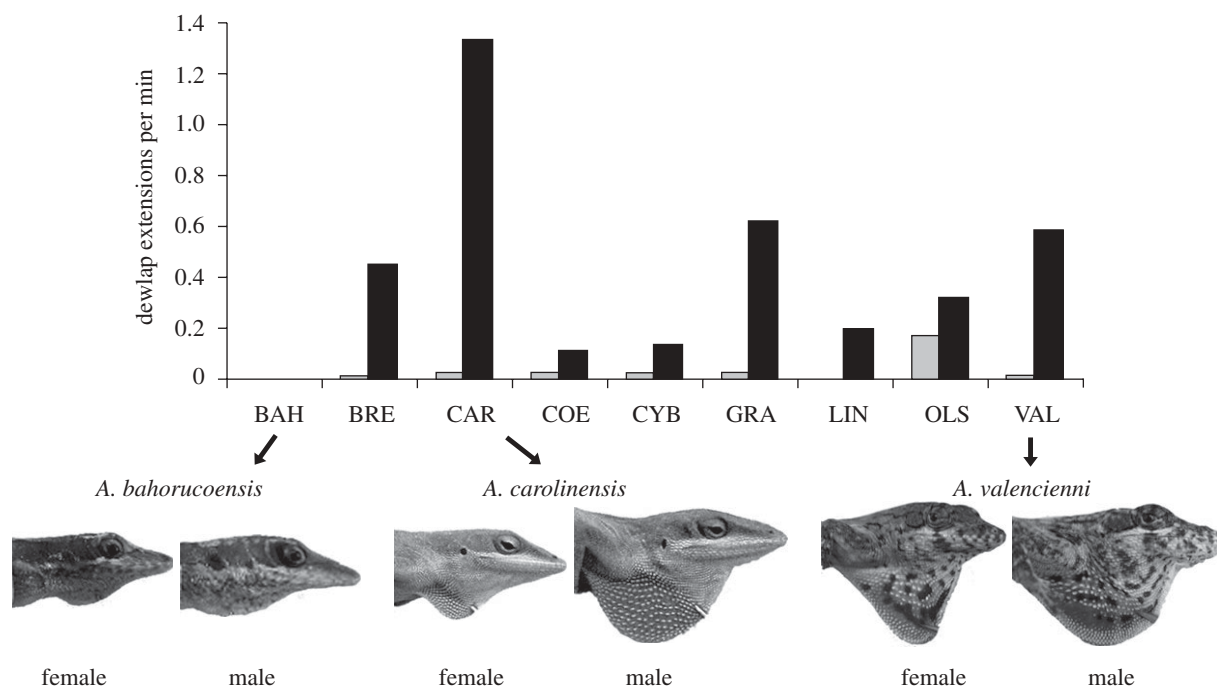


Figure 2. Sexual dimorphism in dewlap use and size. Average dewlap display rates from Johnson (2007). BAH, *A. bahorucoensis*; BRE, *A. brevirostris*; CAR, *A. carolinensis*; COE, *A. coelestinus*; CYB, *A. cybotes*; GRA, *A. grahami*; LIN, *A. lineatopus*; OLS, *A. olsoni*; VAL, *A. valencienni*. Photographs represent the range of sexual dimorphism and dewlap sizes across these species. Dewlaps were fully extended using forceps. Grey shaded box, female; black shaded box, male.

(b) Behaviour

To determine whether the morphology of the dewlap and related structures is associated with functional use of the dewlap across species, we conducted analyses using field behavioural data on the rate of dewlap extension for each sex and species. Behavioural and morphological data for *A. carolinensis* were collected from the same individuals; for all other species, behavioural and morphological variables were assessed in different individuals. Data for seven of the eight Caribbean species in this study (all except *A. brevirostris*, for which behavioural data have not been published) are reported in Johnson (2007) and Johnson *et al.* (in press). For all species, observations were conducted between 06.00 and 19.00 h, and never during inclement weather.

For each Caribbean species except *A. brevirostris*, all adult lizards within 1 or 2 approximately 500 m² plots were captured and given a unique mark. Focal observations were conducted on marked lizards for an average of 65 h on 30–95 animals per species. Each observation lasted 20 min for most species, but for the more cryptic *A. bahorucoensis* and *A. valencienni*, observations lasted up to 180 min. All behaviours were recorded, including dewlap extensions. Each lizard was observed for a maximum of five periods (or, for the two cryptic species, a maximum of 5 h), and behaviour rates were averaged across observations for each individual for statistical analyses. Observations of *A. brevirostris* (10.4 h of observation on 18 animals) and mainland *A. carolinensis* from the US (91 h on 58 animals) were similar, except that unmarked animals were observed.

(c) Statistical analyses

To determine whether species, sex or their interaction differed among the morphological traits, we conducted a multivariate analysis of variance (MANOVA), followed by simple main effect tests (Jaccard 1997) to interpret

species \times sex interactions. Simple main effect tests allow the analysis of one factor by considering the influence of the second factor. This approach reduces type I error across each set of comparisons by reducing the number of contrasts considered (Jaccard 1997).

We calculated an index of sexual dimorphism using the Lovich & Gibbons (1992) 'two-step' ratio (Smith 1999) following Stephens & Wiens (2009) to further examine differences between males and females in these species. This index scales among species of different sizes, and is appropriate for use in phylogenetically informed analyses (Smith 1999; Stephens & Wiens 2009). The index consists of the difference between a value of 1 and the ratio of the average size of the larger sex to the average size of the smaller sex. If males were larger than females on a trait, by convention the ratio was positive.

We used a series of phylogenetically informed analyses to determine whether morphological traits evolved in association with each other and/or with dewlap extension rates. These analyses were conducted using the anole phylogeny in Nicholson *et al.* (2005), pruned to include only the species in this study, with branch lengths made proportional to time using the program r8s (Sanderson 2003). We calculated independent contrasts (Felsenstein 1985) for all traits using the program IDC (Revell 2006). Most contrasts were adequately standardized (following Garland *et al.* 1992). However, contrasts for male SVL, male mass, female mass and female GG fibre size were correlated with contrast length (the sum of the corrected branch lengths subtending the contrasted nodes (Felsenstein 1985)). These contrasts were therefore recalculated using logarithmically transformed branch lengths.

To examine relationships among morphological traits across the nine species, we calculated uncentred correlations (i.e. correlations that assume that the mean of each variable is

zero, analogous to forcing a regression through the origin (as in Garland *et al.* 1992)) on independent contrasts for each trait. p -values were obtained by forcing the regression of each pair of traits through the origin. Because males and females differ dramatically in both size and shape (Butler & Losos 2002), we analysed data from the two sexes separately.

Finally, to determine whether a relationship exists among species in the morphological traits associated with dewlap use and dewlap extension rate, we performed a regression for each sex where contrasts for dewlap extension rate were the dependent variable and contrasts of cartilage length, cross-sectional area of the cartilage, CH height and CH fibre size were the independent variables. To determine whether relationships exist among the sexual dimorphism of these traits, we performed a similar regression using contrasts of sexual dimorphism indices (described above).

3. RESULTS

(a) Sex and species differences in morphology

Qualitative examination of gross throat morphology in preserved museum specimens (table S1 in the electronic supplementary material) revealed that across the nine species, males and females have the same cartilage and muscular components controlling dewlap movement. These features are generally larger in males, but the degree to which males exhibit larger features than females varies across species, particularly for the cartilage (figure S1 in the electronic supplementary material).

Using quantitative measures of morphological traits (table 1), we found significant differences between sexes (male > female), among species and an interaction between them (MANOVA, Wilks' λ -test; sex: $F_{8,143} = 111.0$, $p < 0.001$, partial $\eta^2 = 0.86$; species: $F_{64,831} = 20.7$, $p < 0.001$, partial $\eta^2 = 0.50$; species \times sex: $F_{64,831} = 6.7$, $p < 0.001$, partial $\eta^2 = 0.26$). Univariate analysis of variance (ANOVA) followed by simple main effect tests revealed that within each species, all dewlap-associated traits were larger in males than in females, except for CH fibre size in *A. bahucoensis* and *A. valencienni*, the two anoles previously described as having relatively monomorphic dewlaps (table 2; Hicks & Trivers 1983; Fitch & Henderson 1987; Orrell & Jenssen 1998). Importantly, the sex difference in the CH muscle fibres is not simply associated with larger male size, as for eight of the nine species GG fibre size did not differ between the sexes (p for all species > 0.07 ; table 2). For *A. brevirostris*, the one species in which the sexes differ, this trait is on average only 21 per cent larger in males (GG fibre size: $F_{1,176} = 5.4$, $p = 0.021$), substantially smaller than the 200 per cent sex difference observed in CH fibre area ($F_{1,179} = 22.1$, $p < 0.001$). To further investigate the role of body size on the evolution of dewlap-associated traits, we used analysis of covariance (ANCOVA) with SVL as a covariate. We found that SVL was a significant covariate for each of the four dewlap-associated traits (all $F_{6,155} > 49$, all $p < 0.001$), but that all species and sex differences reported above remain significant (all $p < 0.01$), indicating that differences in dewlap-associated traits among species and between males and females exist independently of body size differences.

(b) Evolution of morphological traits

Variation in the pattern of display behaviours is not explained by variation in any of the dewlap-associated morphological traits, for either males or females (regression with independent contrasts; males: $F_{4,8} = 0.35$, $p = 0.83$, $r^2 = 0.26$; females: $F_{4,8} = 1.93$, $p = 0.27$, $r^2 = 0.66$). Analysis of sexual dimorphism indices (ratios of male:female measures) of these traits also revealed that the degree of sex difference in morphology is unrelated to dimorphism in dewlap extension rate (regression with independent contrasts; $F_{4,8} = 0.24$, $p = 0.90$, $r^2 = 0.19$).

Measures of dewlap-associated traits (cartilage length and area, CH height and fibre size) were correlated with each other in both sexes (table 3). Interestingly, measures of body size were associated with dewlap-associated traits in females but not males.

4. DISCUSSION

(a) Sex differences in morphology and behaviour

The present data indicate that across species, male anoles generally possess larger dewlaps (defined by cartilage length) than females, and males use their dewlaps far more frequently than females (figure 2). Morphology of associated muscles and cartilage is also enhanced in males (tables 1 and 2). These results are consistent with previous work in laboratory-housed *A. carolinensis*, in which males extend their dewlaps far more frequently than females and have larger CH fibres and motoneurons that innervate the CH (O'Bryant & Wade 1999). Further, within male *A. carolinensis*, CH fibre size is positively correlated with dewlap extension rate (Neal & Wade 2007).

Similar associations between morphology and communication behaviour, in which structures used predominantly by one sex are much larger in that sex, exist across vertebrate taxa. Zebra finches (*Taeniopygia guttata*) are perhaps the most dramatic example; males sing but females do not, and the regions of the brain involved in song production and muscles of the vocal organ are much larger in males than in females (Arnold 1997; Wade 2001). In African clawed frogs (*Xenopus laevis*) and midshipmen fish (*Porichthys notatus*), males also vocalize during courtship, and the muscles associated with sound production and the neurons innervating them are larger in males than in females (Sassoon & Kelley 1986; Kelley *et al.* 1988; Bass 1990). Together, these studies provide strong support for the generality of the relationship between the size of neural and muscular structures and the frequency of their use. However, they cannot provide information on causation; larger structures might facilitate or result from enhanced behavioural performance, or the two factors may not be directly related (associations may exist from relationships with a mediating factor). 'Training effects', in which increased muscle use causes growth, are commonly observed in mammalian studies, but studies on squamates have not demonstrated similar plasticity in skeletal muscles in response to exercise (reviewed by Eme *et al.* 2009). Controlled experiments in anole lizards would be required to determine whether such a principle applies to the dewlap. However, CH fibres in adult males are no larger during the breeding season (when males display frequently) than the non-breeding season (when they do not) (Neal & Wade 2007).

Table 1. Morphological traits across nine anole species. (Means with standard deviations are shown. SVL, snout–vent length; GG, genioglossus muscle; and CH, ceratohyoid muscle.)

			measures associated with dewlap use			
	sex	<i>n</i>	cartilage length (mm)	cartilage area (mm ²)	CH depth (mm)	CH fibre size (μm ²)
<i>A. bahorucoensis</i>	M	13	12.8 (2.1)	0.034 (0.005)	0.19 (0.04)	597 (193)
	F	11	8.1 (0.8)	0.011 (0.002)	0.10 (0.02)	439 (101)
<i>A. brevirostris</i>	M	12	17.8 (1.9)	0.062 (0.014)	0.32 (0.08)	846 (170)
	F	10	9.8 (1.4)	0.012 (0.005)	0.10 (0.04)	409 (120)
<i>A. carolinensis</i>	M	12	25.5 (2.6)	0.102 (0.018)	0.46 (0.04)	961 (107)
	F	10	12.9 (3.2)	0.038 (0.007)	0.25 (0.02)	612 (93)
<i>A. coelestinus</i>	M	13	22.4 (3.8)	0.064 (0.012)	0.32 (0.07)	811 (212)
	F	10	13.9 (2.0)	0.023 (0.002)	0.15 (0.05)	397 (69)
<i>A. cybotes</i>	M	12	32.4 (6.3)	0.176 (0.041)	0.50 (0.08)	1035 (321)
	F	10	15.8 (2.9)	0.042 (0.011)	0.22 (0.07)	551 (134)
<i>A. grahami</i>	M	12	25.6 (2.3)	0.091 (0.011)	0.39 (0.10)	1165 (229)
	F	10	13.5 (1.5)	0.020 (0.005)	0.18 (0.03)	448 (84)
<i>A. lineatopus</i>	M	12	32.8 (1.3)	0.154 (0.028)	0.57 (0.08)	1075 (278)
	F	10	13.7 (2.5)	0.024 (0.008)	0.18 (0.04)	531 (142)
<i>A. olssoni</i>	M	12	27.6 (4.5)	0.089 (0.019)	0.39 (0.07)	1054 (314)
	F	10	8.8 (1.8)	0.016 (0.005)	0.16 (0.02)	372 (131)
<i>A. valencienni</i>	M	11	30.0 (3.5)	0.106 (0.029)	0.41 (0.08)	1057 (191)
	F	10	23.5 (0.8)	0.045 (0.006)	0.31 (0.03)	736 (102)
			body size	procedural controls		
	sex	<i>n</i>	SVL (mm)	mass (g)	trachea (mm ²)	GG fibre size (μm ²)
<i>A. bahorucoensis</i>	M	13	41.4 (2.8)	1.31 (0.31)	0.29 (0.05)	1043 (304)
	F	11	36.5 (2.0)	0.93 (0.18)	0.26 (0.03)	1126 (170)
<i>A. brevirostris</i>	M	12	44.0 (3.2)	2.63 (0.43)	0.35 (0.04)	1221 (241)
	F	10	40.7 (1.3)	1.86 (0.22)	0.26 (0.04)	1002 (207)
<i>A. carolinensis</i>	M	12	63.4 (2.5)	5.57 (0.76)	0.41 (0.04)	917 (139)
	F	10	52.1 (3.0)	3.22 (0.46)	0.31 (0.03)	1008 (127)
<i>A. coelestinus</i>	M	13	63.5 (5.2)	5.85 (1.36)	0.64 (0.17)	1301 (257)
	F	10	49.8 (1.0)	2.74 (0.33)	0.36 (0.07)	1143 (197)
<i>A. cybotes</i>	M	12	60.9 (6.3)	6.65 (2.07)	1.02 (0.25)	1320 (271)
	F	10	48.0 (5.5)	3.79 (1.08)	0.57 (0.16)	1198 (316)
<i>A. grahami</i>	M	12	59.7 (5.0)	5.79 (1.69)	0.54 (0.10)	1236 (182)
	F	10	46.0 (2.3)	2.41 (0.50)	0.29 (0.04)	1097 (176)
<i>A. lineatopus</i>	M	12	59.4 (3.1)	5.14 (0.59)	0.65 (0.16)	1138 (172)
	F	10	44.3 (2.4)	2.06 (0.37)	0.32 (0.06)	1119 (115)
<i>A. olssoni</i>	M	12	42.9 (1.9)	1.19 (0.28)	0.20 (0.03)	855 (179)
	F	10	40.0 (3.4)	0.81 (0.29)	0.18 (0.02)	828 (204)
<i>A. valencienni</i>	M	11	62.0 (4.4)	4.09 (1.06)	0.44 (0.09)	1282 (287)
	F	10	54.7 (3.5)	2.70 (0.56)	0.29 (0.01)	1022 (112)

Table 2. Simple main effect tests comparing males and females within each species. (*F*-values shown. Italic font indicates $p < 0.05$; bold font indicates $p < 0.01$; italic and bold font indicate $p < 0.001$. CLEN, cartilage length; CARE, cartilage area; CHHT, CH muscle height; CHF, CH muscle fibre area; SVL, snout–vent length; TRA, trachea area; GGF, GG muscle fibre area.)

species	dewlap-associated measures				body size		procedural controls	
	CLEN	CARE	CHHT	CHF	SVL	MASS	TRA	GGF
<i>A. bahorucoensis</i>	14.2	12.5	11.9	3.4	10.5	1.0	0.7	0.9
<i>A. brevirostris</i>	41.6	54.4	65.0	22.1	4.5	3.7	3.6	5.4
<i>A. carolinensis</i>	102.7	94.5	57.0	19.6	54.1	36.9	4.3	0.9
<i>A. coelestinus</i>	45.7	38.3	51.1	27.1	85.6	81.8	47.3	3.3
<i>A. cybotes</i>	171.9	367.7	113.0	40.1	69.6	54.2	110.5	2.6
<i>A. grahami</i>	94.6	89.3	57.8	70.7	95.5	85.4	37.4	1.6
<i>A. lineatopus</i>	136.4	235.3	149.2	50.2	75.3	49.4	37.2	0.2
<i>A. olssoni</i>	219.0	108.7	72.3	64.6	2.8	0.8	0.2	0
<i>A. valencienni</i>	31.3	52.8	7.1	2.3	17.7	12.3	4.6	0.5

Table 3. Uncentred correlations among morphological traits across nine species. (Values were obtained separately for the two sexes; males are above the diagonal, females below. Significant ($p < 0.05$) correlations are in italics. Abbreviations as in table 2.)

	CLEN	CARE	CHHT	CHF	SVL	MASS	TRA	GGF
CLEN	—	<i>0.886</i>	<i>0.901</i>	<i>0.728</i>	0.523	0.442	0.530	0.178
CARE	<i>0.878</i>	—	<i>0.917</i>	0.620	0.511	<i>0.543</i>	<i>0.724</i>	0.259
CHHT	<i>0.895</i>	<i>0.948</i>	—	<i>0.774</i>	0.570	<i>0.572</i>	0.597	0.110
CHF	<i>0.892</i>	<i>0.830</i>	<i>0.915</i>	—	0.405	<i>0.477</i>	0.415	0.065
SVL	<i>0.922</i>	<i>0.903</i>	<i>0.888</i>	<i>0.780</i>	—	<i>0.920</i>	<i>0.677</i>	0.458
MASS	0.603	<i>0.770</i>	<i>0.571</i>	0.428	<i>0.757</i>	—	<i>0.849</i>	0.610
TRA	0.485	0.646	0.382	0.295	0.500	<i>0.826</i>	—	<i>0.727</i>
GGF	0.540	0.506	0.318	0.382	0.434	0.647	<i>0.821</i>	—

(b) *Species differences in morphology and behaviour*

Individual species such as those described above have served as excellent model systems for mechanisms of behaviour, yet to more fully understand the evolution of such traits and the generality of structure–function relationships, investigations among taxa are necessary. While comparing distantly related species is informative (Brenowitz 1997), it can be difficult to identify behavioural measures appropriate for each of them. Indeed, even closely related species can exhibit extensive variation in communication-associated morphology and behaviour. *Anolis* lizards provide a system in which variation in communication traits allows for powerful tests of structure–function relationships, yet their behaviours and morphologies are similar enough to permit direct comparison across species.

Although we generally found consistent sex differences in dewlap-associated morphologies and frequency of their use within anole species, phylogenetic comparative analyses did not reveal such relationships across the nine species. In particular, we found no evidence for the association of dewlap morphology and use across species in regression analyses. This discrepancy is especially noticeable with comparison of the two species in which males and females have relatively monomorphic dewlaps (Hicks & Trivers 1983; Fitch & Henderson 1987; Orrell & Jenssen 1998). The sexes do not differ in the size of the CH muscle fibres in either *A. valencienni* or *A. bahorucoensis* (table 2), yet males and females differ dramatically in their dewlap use in the former but not the latter (figure 2). This pattern suggests that, across species and sexes, the size of CH fibres is directly associated with the size of the dewlap (cartilage length; table 3) but can be unrelated to the degree to which the muscle is used. Therefore, while a general pattern between dewlap morphology and use exists, some morphological components may have evolved independently of the rate of dewlap use.

Together, the present results nicely parallel findings from the bird song literature, in which some mechanistic traits involved in communication are conserved across taxa, while species-specific morphologies allow species-specific signal patterns. For example, phylogenetic studies of oropendolas and caciques show that while many characteristics of bird song are conserved (Price & Lanyon 2002), particular components of song organization and structure have evolved in lineage-specific patterns (Price & Lanyon 2004). Further, while the

syrinx is responsible for producing song across all species, different species have evolved distinct structures and motor patterns that allow them to produce particular acoustic features (Suthers *et al.* 1999; Suthers & Zollinger 2004).

(c) *Ecological contexts of communication behaviours*

Species-specific patterns of morphology and behaviour may result from a variety of ecological factors. In the case of anoline dewlaps, one possibility is that species with differing population densities may experience different rates of social interaction, which would probably include dewlap use. However, no relationship between density and dewlap use exists in this dataset (Johnson *et al.* in press).

Another potential influence is predation rate, as use of the colourful dewlaps presumably makes anoles more susceptible to visually oriented predators. Yet, the one mainland species (*A. carolinensis*) that presumably encounters the highest predation risk (as predators are generally more abundant and diverse on mainlands) displays the highest rate of dewlap use. This pattern suggests indirect support for the pursuit-deterrence hypothesis, which states that signals given by prey when they detect a predator cause the predator to stop its pursuit (Caro 1995), and raises the possibility that the relatively high display rate of *A. carolinensis* is the result of increased predation risk. This idea is consistent with results from a study comparing populations of *A. sagrei* in differing predation regimes (Vanhooydonck *et al.* 2009).

Additionally, varying sexual selection across species may result in different signals conveyed by dewlap extension. Males of species that experience more competition, and thus stronger sexual selection pressure, are generally predicted to exhibit greater sexual size dimorphism (SSD) and to evolve honest signals of fighting ability (Andersson 1994). High SSD anoles might then be expected to exhibit associations between fighting ability and dewlap morphology and/or behaviour. However, Lailvaux & Irschick (2007) found that dewlap size was a significant predictor of the winner of male conflicts in species with low, but not high, SSD. Further, dewlap rate was not associated with SSD (Lailvaux & Irschick 2007), a finding consistent with our results, as *A. bahorucoensis*, *A. brevirostris*, *A. olsoni* and *A. valencienni* are considered low SSD (Butler & Losos 2002) and did not exhibit consistently

different dewlap rates from the high SSD species (figure 2). Sexual selection does not appear to explain variation in dewlap behaviour, but it may play a role in dewlap-associated musculature, as the two species in which CH fibres were equivalent between the sexes (*A. bahorucoensis* and *A. valencienni*) are both low SSD. This pattern could suggest that species with more intense sexual selection have evolved larger CH muscles in response to the need to communicate fighting ability, but does not explain the sexual dimorphism in musculature in the other two low SSD species.

The habitats in which signals are performed are also likely to influence the evolution of communication traits. Among anoles, species in high visibility habitats display more frequently than those in low visibility habitats (Johnson *et al.* in press). However, this pattern does not explain the variation among female dewlap use, as in *A. olssoni* (a species that occurs in tall grasses with very low visibility), females appear to display more frequently than those of the other species (figure 2). Nicholson *et al.* (2007) also found that anole species in the same structural habitat have evolved very different dewlap morphologies, but suggest that different light environments may explain the evolution of this variation. Anole species in sunny habitats extend their dewlaps more frequently than those in shade (Ord & Martins 2006), but light conditions appear to be unrelated to the evolution of dewlap colour and signal detectability (Fleishman *et al.* 2009). Additional field studies are necessary to determine which ecological contexts are critical influences in the evolution of both the behaviours and their underlying morphological structures.

(d) Influence of body size on dewlap evolution

In analyses of any morphological trait, one might expect larger species (or the larger sex) to have correspondingly evolved larger structures. Therefore, when comparing morphologies across species, it is important to consider body size. Among the anole species, dewlap-associated morphological traits were generally positively correlated for both sexes (table 3), indicating that as larger dewlaps have evolved, the underlying structures have also increased in size.

However, our two measures of body size (SVL and mass) exhibited different relationships with dewlap-associated traits for males and females (table 3). Across the nine species, larger male body size was correlated with one procedural control (trachea size), but none of the dewlap-associated traits. In females, however, body size (SVL in particular) was positively correlated with all four measures of dewlap-associated structures. This pattern may be the result of differential selective pressures for the sexes, with natural selection an important evolutionary forces for both sexes, but sexual selection an important evolution force for males only (Vanhooydonck *et al.* 2009). Dewlaps are traits used predominantly by males during courtship and in territorial competitions with other males (Jenssen 1977). As such an important component of communication, the pressures to evolve effective signals in a particular environment while maintaining a structure size that does not overly handicap the animal may be stronger forces driving the evolution

of dewlap size than would be predicted by an allometric relationship with body size. Females, in contrast, generally use their dewlaps rarely, and almost never in reproductive contexts (Jenssen *et al.* 2000; Losos 2009). Thus, there may be no selective pressure for females to evolve dewlap-associated traits beyond the minimum required size for dewlap extension, with little or no pressure from sexual selection to evolve larger CH muscles. Because the contexts in which females use their dewlap have been little studied (Nunez *et al.* 1997; Jenssen *et al.* 2000), and equivocal data exist regarding the importance of the male dewlap in female mate choice (Tokarz 1995) and male territory defence (Tokarz *et al.* 2003; Vanhooydonck *et al.* 2005), this hypothesis remains to be evaluated.

In summary, structure–function relationships have long been a focus of studies on behavioural mechanisms. Our analyses of anole dewlaps demonstrate that while morphology and function are often associated, such that commonly used structures have generally evolved larger sizes, the generality of these patterns is limited by species-specific differences that are probably constrained by the ecological contexts in which the structures are used. While evolutionary and mechanistic studies of behaviour typically use different methodologies and address different questions, increasing studies that combine the two approaches can eventually lead to an integrative understanding of the relationships among structural and functional traits.

All procedures were performed in accordance with the guidelines of the Michigan State University Institutional Animal Care and Use Committee.

We thank T. Hsieh, R. Cohen and J. Vandecar for valuable field assistance, J. Caton for tissue sectioning and three anonymous reviewers for helpful comments on earlier versions of this manuscript. We also appreciate the support of Circle B Farm, Discovery Bay Marine Laboratory and K. Gaynor in Jamaica; Coralsol Beach Resort in the Dominican Republic; and Jean Lafitte National Park, Barataria, and D. Horton in Louisiana. This work was supported by a Michigan State University Provost Office Postdoctoral Fellowship to M.A.J. and NSF IOS-0742833 to J.W.

REFERENCES

- Andersson, M. 1994 *Sexual selection*. Princeton, NJ: Princeton University Press.
- Arnold, A. P. 1997 Sexual differentiation of the zebra finch song system: positive evidence, negative evidence, null hypothesis, and a paradigm shift. *J. Neurobiol.* **33**, 572–584. (doi:10.1002/(SICI)1097-4695(19971105)33:5<572::AID-NEU6>3.0.CO;2-1)
- Ball, G. F., Auger, C. J., Bernard, D. J., Charlier, T. D., Sartor, J. J., Ritters, L. V. & Balthazart, J. 2004 Seasonal plasticity in the song control system: multiple brain sites of steroid hormone action and the importance of variation in song behavior. *Ann. N. Y. Acad. Sci.* **1016**, 586–610. (doi:10.1196/annals.1298.043)
- Bass, A. H. 1990 Sounds from the intertidal zone-vocalizing fish. *Bioscience* **40**, 249–258. (doi:10.2307/1311261)
- Breedlove, S. M. & Arnold, A. P. 1980 Hormone accumulation in a sexually dimorphic motor nucleus of the rat spinal cord. *Science* **210**, 564–566. (doi:10.1126/science.7423210)

- Brenowitz, E. A. 1997 Comparative approaches to the avian song system. *J. Neurobiol.* **33**, 517–531. (doi:10.1002/(SICI)1097-4695(19971105)33:5<517::AID-NEU3>3.0.CO;2-7)
- Brenowitz, E. A. & Beecher, M. D. 2005 Song learning in birds: diversity and plasticity, opportunities and challenges. *Trends Neurosci.* **28**, 127–132. (doi:10.1016/j.tins.2005.01.004)
- Butler, M. A. & Losos, J. B. 2002 Multivariate sexual dimorphism, sexual selection, and adaptation in Greater Antillean *Anolis* lizards. *Ecol. Monogr.* **72**, 541–559.
- Caro, T. M. 1995 Pursuit-deterrence revisited. *Trends Ecol. Evol.* **10**, 15–29. (doi:10.1016/S0169-5347(00)89207-1)
- Cooke, B., Hegstrom, C. D., Villeneuve, L. S. & Breedlove, S. M. 1998 Sexual differentiation of the vertebrate brain: principles and mechanisms. *Front. Neuroendocrinol.* **19**, 323–362. (doi:10.1006/frne.1998.0171)
- Devoogd, T. J., Krebs, J. R., Healy, S. D. & Purvis, A. 1993 Relations between song repertoire size and the volume of brain nuclei related to song: comparative evolutionary analyses amongst oscine birds. *Proc. R. Soc. Lond. B* **254**, 75–82. (doi:10.1098/rspb.1993.0129)
- Eme, J., Owerkowicz, T., Gwalthney, J., Blank, J. M., Rourke, B. C. & Hicks, J. W. 2009 Exhaustive exercise training enhances aerobic capacity in American alligator (*Alligator mississippiensis*). *J. Comp. Physiol. B* **179**, 921–931. (doi:10.1007/s00360-009-0374-0)
- Felsenstein, J. 1985 Phylogenies and the comparative method. *Am. Nat.* **125**, 1–15. (doi:10.1086/284325)
- Fitch, H. S. & Henderson, R. W. 1987 Ecological and ethological parameters in *Anolis bahorucoensis*, a species having rudimentary development of the dewlap. *Amphibia–Reptilia* **8**, 69–80. (doi:10.1163/156853887X00063)
- Fleishman, L. J., Leal, M. & Persons, M. H. 2009 Habitat light and dewlap color diversity in four species of Puerto Rican anoline lizards. *J. Comp. Physiol. A* **195**, 1043–1060. (doi:10.1007/S00359-009-0478-8)
- Garland, T., Harvey, P. H. & Ives, A. R. 1992 Procedures for the analysis of comparative data using phylogenetically independent contrasts. *Syst. Biol.* **41**, 18–32.
- Hicks, R. A. & Trivers, R. L. 1983 The social behavior of *Anolis valencienni*. In *Advances in herpetology and evolutionary biology* (eds A. G. J. Rhodin & K. Miyata), pp. 570–595. Cambridge, MA: Museum of Comparative Zoology.
- Jaccard, J. 1997 *Interaction effects in factorial analysis of variance*. Thousand Oaks, CA: Sage Publications.
- Jenssen, T. A. 1977 Evolution of anoline display behavior. *Am. Zool.* **17**, 203–215.
- Jenssen, T. A., Orrell, K. S. & Lovern, M. B. 2000 Sexual dimorphisms in aggressive signal structure and use by a polygynous lizard *Anolis carolinensis*. *Copeia* **2000**, 140–149. (doi:10.1643/0045-8511(2000)2000[0140:SDIASS]2.0.CO;2)
- Johnson, M. A. 2007 *Behavioral ecology of Caribbean Anolis lizards: a comparative approach*. St Louis, MO, USA: Washington University.
- Johnson, M. A., Revell, L. J. & Losos, J. B. In press. Behavioral convergence and adaptive radiation: effects of habitat use on territorial behavior in *Anolis* lizards. *Evolution*. (doi:10.1111/j.1558-5646.2009.00881.x)
- Kelley, D. B., Fenstermaker, S., Hannigan, P. & Shih, S. 1988 Sex differences in the motor nucleus of cranial nerve IX–X in *Xenopus laevis*: a quantitative Golgi study. *J. Neurobiol.* **19**, 413–429. (doi:10.1002/neu.480190503)
- Lailvaux, S. P. & Irschick, D. J. 2007 The evolution of performance-based male fighting ability in Caribbean *Anolis* lizards. *Am. Nat.* **170**, 573–586. (doi:10.1086/521234)
- Leal, M. & Rodriguez Robles, J. A. 1997 Signalling displays during predator–prey interactions in a Puerto Rican anole, *Anolis cristatellus*. *Anim. Behav.* **54**, 1147–1154. (doi:10.1006/anbe.1997.0572)
- Losos, J. B. 2009 *Lizards in an evolutionary tree: ecology and adaptive radiation of anoles*. Berkeley, CA: University of California Press.
- Lovich, J. E. & Gibbons, J. W. 1992 A review of techniques for quantifying sexual size dimorphism. *Growth Develop. Aging* **56**, 269–281.
- MacDougall-Shackleton, S. A. & Ball, G. F. 1999 Comparative studies of sex differences in the song-control system of songbirds. *Trends Neurosci.* **22**, 432–436. (doi:10.1016/S0166-2236(99)01434-4)
- Monks, S. P. 1881 A partial biography of the green lizard. *Am. Nat.* **15**, 96–99. (doi:10.1086/272750)
- Neal, J. K. & Wade, J. 2007 Courtship and copulation in the adult male green anole: effects of season, hormone and female contact on reproductive behavior and morphology. *Behav. Brain Res.* **177**, 177–185. (doi:10.1016/j.bbr.2006.11.035)
- Nicholson, K. E., Glor, R. E., Kolbe, J. J., Larson, A., Hedges, S. B. & Losos, J. B. 2005 Mainland colonization by island lizards. *J. Biogeogr.* **32**, 929–938. (doi:10.1111/j.1365-2699.2004.01222.x)
- Nicholson, K. E., Harmon, L. J. & Losos, J. B. 2007 Evolution of *Anolis* lizard dewlap diversity. *PLoS ONE* **2**, e274. (doi:10.1371/journal.pone.0000274)
- Nottebohm, F. & Arnold, A. P. 1976 Sexual dimorphism in vocal control areas of the songbird brain. *Science* **4261**, 211–213. (doi:10.1126/science.959852)
- Nunez, S. C., Jenssen, T. A. & Ermland, K. 1997 Female activity profile of a polygynous lizard (*Anolis carolinensis*): evidence of intersexual asymmetry. *Behaviour* **134**, 205–223. (doi:10.1163/156853997X00458)
- O'Bryant, E. L. & Wade, J. 1999 Sexual dimorphisms in a neuromuscular system regulating courtship in the green anole lizard: effects of season and androgen treatment. *J. Neurobiol.* **40**, 202–213. (doi:10.1002/(SICI)1097-4695(199908)40:2<202::AID-NEU6>3.0.CO;2-A)
- Ord, T. J. & Martins, E. P. 2006 Tracing the origins of signal diversity in anole lizards: phylogenetic approaches to inferring the evolution of complex behaviour. *Anim. Behav.* **71**, 1411–1429. (doi:10.1016/j.anbehav.2005.12.003)
- Orrell, K. S. & Jenssen, T. A. 1998 Display behavior of *Anolis bahorucoensis*: an anole with a diminutive dewlap. *Carib. J. Sci.* **34**, 113–125.
- Price, J. J. & Lanyon, S. M. 2002 Reconstructing the evolution of complex bird song in the oropendolas. *Evolution* **56**, 1514–1529.
- Price, J. J. & Lanyon, S. M. 2004 Patterns of song evolution and sexual selection in the oropendolas and caciques. *Behav. Ecol.* **14**, 485–497. (doi:10.1093/beheco/arh040)
- Revell, L. J. 2006. IDC: a program for the calculation of independent contrasts. See <http://anolis.oeb.harvard.edu/~liam/programs/>.
- Sanderson, M. J. 2003 r8 s: inferring absolute rates of evolution and divergence times in the absence of a molecular clock. *Bioinformatics* **19**, 301–302. (doi:10.1093/bioinformatics/19.2.301)
- Sassoon, D. & Kelley, D. B. 1986 The sexually dimorphic larynx of *Xenopus laevis*: development and androgen regulation. *Am. J. Anat.* **177**, 457–472. (doi:10.1002/aja.1001770404)
- Smith, R. J. 1999 Statistics of sexual size dimorphism. *J. Hum. Evol.* **36**, 423–459. (doi:10.1006/jhev.1998.0281)

- Stephens, P. R. & Wiens, J. J. 2009 Evolution of sexual size dimorphisms in emydid turtles: ecological dimorphism, Rensch's rule, and sympatric divergence. *Evolution* **63**, 910–925. (doi:10.1111/j.1558-5646.2008.00597.x)
- Suthers, R. A. & Zollinger, S. A. 2004 Producing song: the vocal apparatus. *Ann. N. Y. Acad. Sci.* **1016**, 109–129. (doi:10.1196/annals.1298.041)
- Suthers, R. A., Goller, F. & Pytte, C. 1999 The neuromuscular control of birdsong. *Phil. Trans. R. Soc. Lond. B* **354**, 927–939. (doi:10.1098/rstb.1999.0444)
- Székely, T., Catchpole, C. K., Devoogd, A., Marchl, Z. & Devoogd, T. J. 1996 Evolutionary changes in a song control area of the brain (HVC) are associated with evolutionary changes in song repertoire among European warblers (Sylviidae). *Proc. R. Soc. Lond. B* **263**, 607–610. (doi:10.1098/rspb.1996.0091)
- Tokarz, R. R. 1995 Mate choice in lizards: a review. *Herpetol. Monogr.* **9**, 17–40. (doi:10.2307/1466994)
- Tokarz, R. R., Paterson, A. V. & McMann, S. 2003 Laboratory and field test of the functional significance of the male's dewlap in the lizard *Anolis sagrei*. *Copeia* **2003**, 502–511. (doi:10.1643/00-170)
- Vanhooydonck, B., Herrel, A. Y., van Damme, R. & Irschick, D. J. 2005 Does dewlap size predict male bite performance in Jamaican *Anolis* lizards? *Funct. Ecol.* **19**, 38–42. (doi:10.1111/j.0269-8463.2005.00940.x)
- Vanhooydonck, B., Herrel, A., Meyers, J. J. & Irschick, D. J. 2009 What determines dewlap diversity in *Anolis* lizards? An among-island comparison. *J. Evol. Biol.* **22**, 293–305. (doi:10.1111/j.1420-9101.2008.01643.x)
- Wade, J. 2001 Zebra finch sexual differentiation: the aromatization hypothesis revisited. *Microsc. Res. Tech.* **54**, 354–363. (doi:10.1002/jemt.1148)
- Wade, J. 2005 Current research on the behavioral neuroendocrinology of reptiles. *Horm. Behav.* **48**, 451–460. (doi:10.1016/j.yhbeh.2005.02.006)