

Catalogue

Measurements are in centimeters; weights are in grams. All of the drawings of the inscriptions were made by Dr. Jessica Powers, Curator of Western Antiquities at SAMA except M, which was made by Allyson Walsh.

1a. (Plate I) *Shallow Bowl*

Roman or Byzantine, third – sixth century C.E.
Diameter 5.2; weight 22.
SAMA Acc. No. 86.138.1a.

Small, undecorated bowl with an outturned rim and a round bottom.

Condition There is a small band of corrosion underneath the rim as well as several deep scratches on the underside of the bowl.

Bibliography For a bowl with a similar shape see Mango 1986 112, no. 16.

3. (Plate II) *Shallow Circular Dish*

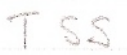
Roman, first century C.E.
Diameter 9.5; weight 96.
SAMA Acc. No. 86.138.3.

This dish has a raised rim ornamented by a concave moulding alternating with engraved lines and sits on a low footring. There are turning holes indicative of manufacture on a lathe on both sides of the dish.

Inscriptions

A. 

(Plate II C) Scratched underneath plate inside the footring. The second alpha is covered by discoloration.

B. 

(Plate II C) Dotted inscription, just inside footring, opposite from A, and upside down with respect to A.

Condition There is a fair amount of corrosion and discoloration on both sides of the dish.

Comment Set of six along with nos. 4-8 and bears the same inscription as nos. 17 and 18.

Bibliography For a similar dish see Mango 1986, 278.

4. (Plate III) *Shallow Circular Dish*

Roman, first century C.E.
Diameter 9.7; weight 112.
SAMA Acc. No. 86.138.4.

This dish has a raised rim ornamented by a concave moulding alternating with engraved lines and sits on a low footring. There are turning holes indicative of manufacture on a lathe on both sides of the dish.

Inscription

C. 

(Plate III C) Scratched underneath the dish inside the footring.

Condition Complete.

Comment Set of 6 along with nos. 3, 5-8 and bears the same inscription as nos. 17 and 18.

Bibliography For a similar dish see Mango 1986, 278.

5. (Plate IV) *Shallow Circular Dish*

Roman, first century C.E.
Diameter 9.7; weight 105.
SAMA Acc. No. 86.138.5.

This dish has a raised rim ornamented by a concave moulding alternating with engraved lines and sits on a low footring. There are turning holes indicative of manufacture on a lathe on both sides of the dish.

Inscription

D. 

(Plate IV C) Scratched underneath the dish inside the footring.

Condition There is a small amount of corrosion on the rim and slightly more underneath within the footring.

Comment Set of six along with nos. 3,4, 6-8 and bears the same inscription as nos. 17 and 18.

Bibliography For a similar dish see Mango 1986, 278.

6. (Plate V) *Shallow Circular Dish*

Roman, first century C.E.
Diameter 9.5 weight 102.
SAMA Acc. No. 86.138.6.

This dish has a raised rim ornamented by a concave moulding alternating with engraved lines and sits on a low footring. There are turning holes indicative of manufacture on a lathe on both sides of the dish.

There are some scratchings below inscription E that could be letters but are illegible.

Inscription

E. 

(Plate V C) Scratched on the back of the dish inside the footring.

Condition There is a small amount of corrosion both sides of the rim.

Comment Set of six along with nos. 3-5, 7, 8 and bears the same inscription as nos. 17 and 18.

Bibliography For a similar dish see Mango 1986, 278.

7. (Plate VI) *Shallow Circular Dish*

Roman, first century C.E.
Diameter 9.5; weight 106.
SAMA Acc. No. 86.138.7.

This dish has a raised rim ornamented by a concave moulding alternating with engraved lines and sits on a low footring. There are turning holes indicative of manufacture on a lathe on both sides of the dish.

Inscription

F. 

(Plate VI C) Scratched on the back of the dish inside the footring.

G. 

(Plate VI A) Large X scratched into face of dish.

Condition Complete. There is a small amount of corrosion on the footring.

Comment Set of six along with nos. 3-6, 8 and bears the same inscription as nos. 17 and 18.

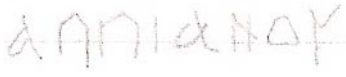
Bibliography For a similar dish see Mango 1986, 278.

8. (Plate VII) *Shallow Circular Dish*

Roman, first century C.E.
Diameter 9.5; weight 99.
SAMA Acc. No. 86.138.8.

This dish has a raised rim ornamented by a concave moulding alternating with engraved lines and sits on a low footring. There are turning holes indicative of manufacture on a lathe on both sides of the dish.

Inscription

H. 

(Plate VII C) Scratched on the back of the dish inside the footring.

Condition Complete. There are a few small areas of discoloration on both sides of the dish.

Comment Set of six along with nos. 3-7 and bears the same inscription as nos. 17 and 18.

Bibliography For a similar dish see Mango 1986, 278.

9. (Plate VIII) *Small Bowl*

Roman, first century C.E.
Diameter 7.1; weight 68.
SAMA Acc. No. 86.138.9.

This shallow, undecorated bowl has a flat rim and sits on a low footring. There are turning holes indicative of manufacture on a lathe on both sides of the bowl.

Condition Almost half of the surface of the interior of the bowl is covered with corrosion.

Comment Set of three along with nos. 10 and 11.

10. (Plate IX) *Small Bowl*

Roman, first century C.E.
Diameter 7.2; weight 70.
SAMA Acc. No. 86.138.10.

This shallow, undecorated bowl has a flat rim and sits on a low footring. There are turning holes indicative of manufacture on a lathe on both sides of the bowl.

Condition There is a fair amount of corrosion all over the bowl.

Comment Set of three along with nos. 9 and 11.

11. (Plate X) *Small Bowl*

Roman, first century C.E.
Diameter 7.2; weight 65.
SAMA Acc. No. 86.138.11.

This shallow, undecorated bowl has a flat rim and sits on a low footring. There are turning holes indicative of manufacture on a lathe on both sides of the bowl.

Condition There is a fair amount of corrosion on both sides of the bowl.

Comment Set of three along with nos. 9 and 10

12. (Plate XI) *Small Bowl*

Roman, first century C.E.
Diameter 9.4, weight 97.
SAMA Acc. No. 86.138.12.

This bowl has an outturned rim decorated with a concave moulding and sits on a low footring. Turning holes on both sides of the bowl and concentric burnishing lines within the footring indicate it was made on a lathe.

Condition Complete. A small amount of corrosion and several scratches underneath the base of the bowl.

Comment Set of three along with nos. 13 and 14.

13. (Plate XII) *Small Bowl*

Roman, first century C.E.
Diameter 9.4; weight 99.
SAMA Acc. No. 86.138.13.

This bowl has an outturned rim decorated with a concave moulding and sits on a low footring. Turning holes on both sides of the bowl and concentric burnishing lines within the footring indicate it was made on a lathe. There are several letters and numbers scratched inside the footring.

Inscription



(Plate XII C) Scratched between the central circle and footring, possibly graffito or incidental marks.

Condition The interior of the bowl is pristine and the back is covered in corrosion.

Comment Set of three along with nos. 12 and 14.

14. (Plate XIII) *Small Bowl*

Roman, first century C.E.
Diameter 9.4; weight 74.
SAMA Acc. No. 86.138.14.

This bowl has an outturned rim and sits on a low footring. In the center interior is a stylized five-petaled rosette. There is a turning hole indicative of manufacture on a lathe underneath the bowl.

Condition There are several scratches underneath the bowl in addition to three large pieces missing from the sides bowl. It is also slightly bent.

Comment Set of three along with nos. 12 and 13.

Bibliography Guzzo 2006, 92, no. 53 and 127, nos. 115-118.

15. (Plate XIV) *Small Bowl*

Roman, first century C.E.
Diameter 12.3; weight 135.
SAMA Acc. No 86.138.15.

This shallow bowl has an outturned rim decorated with a concave moulding and sits on a low footring. Turning holes on both sides of the bowl and concentric burnishing lines within the footring indicate it was made on a lathe.

Condition There is a medium-sized piece missing from the bowl and the area surrounding it is dented and warped.

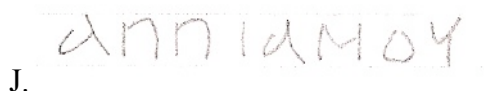
Comment The style of this bowl is very similar to nos. 12-14 but its diameter is 3 cm greater and it is about 30 grams heavier.

17. (Plate XV) *Circular Shallow Dish*

Roman, first century C.E.
Diameter 11.2; weight 114.
SAMA Acc. No. 86.138.17.

This shallow dish has a raised rim ornamented by a concave moulding alternating with engraved lines and sits on a low footring. In the center interior is a small eight-petaled flower, with a small hole in its center. Turning holes on both sides of the dish and concentric burnishing lines within the footring indicate it was made on a lathe.

Inscription



J.

(Plate XV C) Scratched underneath the dish inside the footring.

Condition The front of the dish is covered with small tool marks and scratches. There is a moderate amount of corrosion all over the dish.

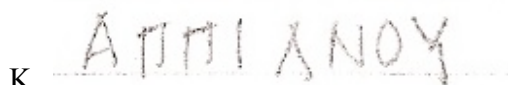
Comment Pair with no. 18 and bears the same inscription as nos. 3-8.

18. (Plate XVI) Circular Shallow Dish

Roman, first century C.E.
Diameter 11.2; weight 99.
SAMA Acc. No. 86.138.18.

This shallow dish has a raised rim ornamented by a concave moulding alternating with engraved lines and sits on a low footring. There is a small flower with eight petals in the center of the dish.

Inscription



K.

(Plate XVI C) Scratched underneath the dish inside the footring.

Condition The interior of the dish is covered with a uniform layer of corrosion.

Comment Pair with no. 17 and bears the same inscription as nos. 3-8.

19. (Plate XVII) Circular Shallow Dish

Roman, first century C.E.
Diameter 7.4; weight 64.

SAMA Acc. No. 86.138.19.

This shallow dish has a raised rim ornamented by a concave moulding alternating with engraved lines and sits on a low footring. On the exterior dish inside the footring is a raised circular area.

Condition There is a moderate amount of corrosion in isolated areas on both sides of the dish.

Comment Set of four along with nos. 20, 21, 25.

20. (Plate XVIII) Circular Shallow Dish

Roman, first century C.E.
Diameter 7.4; weight 62.
SAMA Acc. No. 86.138.20.

Shallow dish with raised rim. Sits on a low footring. The rim ornamented by a concave moulding alternating with engraved lines. It sits on a low footring. Turning holes on both sides of the dish and concentric burnishing lines within the footring indicate it was made on a lathe.

Condition The face of the plate is covered with small abrasions and one scratch of significant size. There is an isolated area of corrosion and discoloration on the exterior of the plate.

Comment Set of four along with nos. 19, 21, 25.

21. (Plate XIX) Circular Shallow Dish

Roman, first century C.E.
Diameter 7.5; weight 62.
SAMA Acc. No. 86.138.21.

This shallow dish has raised rim ornamented by a concave moulding alternating with engraved lines and sits on a low footring. Turning holes on both sides of the dish and concentric burnishing lines within the footring indicate it was made on a lathe.

Condition Complete. A small amount of corrosion on the interior of the dish.

Comment Set of four along with nos. 19, 20, 25.

22. (Plate XXA-B) *Small Shallow Dish*

Roman, first century C.E.
Diameter 7.3; weight 49.
SAMA Acc. No. 86.138.22.

This small circular dish has a flat rim and sits on a low footring. A turning hole and concentric burnishing lines within the footring indicate it was made on a lathe.

Condition There is a moderate amount of corrosion on the interior of the plate and a greater amount on the exterior.

Comment Set of eight along with nos. 23, 24, 26-30.

23. (Plate XXIA-B) *Small Shallow Dish*

Roman, first century C.E.
Diameter 7.3; weight 51.
SAMA Acc. No. 86.138.23.

This small circular dish has a flat rim and sits on a low footring. There is a turning hole indicative of manufacture on a lathe underneath the dish inside the footring.

Condition Complete. Three parallel scratches inside the footring.

Comment Set of eight along with nos. 22, 24, 26-30.

24. (Plate XXII) *Small Shallow Dish*

Roman, first century C.E.
Diameter 7.3; weight 47.

SAMA Acc. No. 86.138.24.

This small circular dish has a flat rim and sits on a low footring. There are turning holes indicative of manufacture on a lathe on both sides of the dish.

Condition There are several scratches on the interior of the plate in addition to a small amount of corrosion. On the exterior of the plate there is also a small amount of corrosion.

Comment Set of eight along with nos. 22, 23, 26-30.

25. (Plate XXIII) *Small Shallow Dish*

Roman, first century C.E.
Diameter 7.4; weight 63.
SAMA Acc. No. 86.138.25.

This small circular dish has a flat rim and sits on a low footring. There is a turning hole indicative of manufacture on a lathe underneath the dish inside the footring.

Condition Complete with the exception of three parallel scratches inside the footring.

Comment Set of four along with nos. 19-21.

26. (Plate XXIV) *Small Shallow Dish*

Roman, first century C.E.
Diameter 7.3; weight 46.
SAMA Acc. No. 86.138.26.

This small circular dish has a flat rim and sits on a low footring.

Condition There is a small amount of corrosion on the interior of the plate in addition to one large scratch.

Comment Set of eight along with nos. 22-24, 27-30.

27. (Plate XXV) *Small Shallow Dish*

Roman, first century C.E.
Diameter 7.4; weight 45.
SAMA Acc. No. 86.138.27.

This small circular dish has a flat rim and sits on a low footring.

Condition Complete. One scratch on the interior of the plate.

Comment Set of eight along with nos. 22-24, 26, 28-30.

28. (Plate XXVI) *Small Shallow Dish*

Roman, first century C.E.
Diameter 7.3; weight 47.
SAMA Acc. No. 86.138.28.

This small circular dish has a flat rim and sits on a low footring.

Condition Complete. Small areas of corrosion and small scratches.

Comment Set of eight along with nos. 22-24, 26, 27, 29, 30.

29. (Plate XXVII) *Small Shallow Dish*

Roman, first century C.E.
Diameter 7.3; weight 50.
SAMA Acc. No. 86.138.29.

This small circular dish has a flat rim and sits on a low footring. There is a turning hole indicative of manufacture on a lathe underneath the dish inside the footring.

Condition A large area of the interior of the plate is covered with corrosion.

Comment Set of eight along with nos. 22-24, 26-28, 30.

30. (Plate XXVIII) *Small Shallow Dish*

Roman, first century C.E.
Max. Diameter 7.5; weight 49.
SAMA Acc. No. 86.138.30.

This small circular dish has a flat rim and sits on a low footring. There is a turning hole indicative of manufacture on a lathe underneath the dish inside the footring.

Condition This dish has been bent in half along a central axis. It is relatively free from corrosion and scratches.

Comment Set of eight along with nos. 22-24, 26-29.

31. (Plate XXIX) *Circular Shallow Dish*

Roman, first century C.E.
Diameter 6.1; weight 29.
SAMA Acc. No. 86.138.31.

This circular shallow dish has a flat rim decorated with beading and it sits on a low base. There is also an incised decoration of a bird standing on a branch in the center of the dish. There is a turning hole and concentric burnishing lines indicative of manufacture on a lathe on the base of this dish.

Condition The interior of the dish is covered with a thin layer of scratches and corrosion.

Comment Part of a set with nos. 32-34.

Bibliography See Painter 2001, nos. M18-19 for a similar bird motif and for similar beading see Strong 1966, plate 41 B and Painter 2001, nos. M44-55.

32. (Plate XXX) *Small Oval Dish*

Roman, first century C.E.
Length 7.1, width 5.3; weight 50.
SAMA Acc. No. 86.138.32.

This small oval dish has a flat rim decorated with beading and sits on a low base ring. There is a turning hole indicative of manufacture on a lathe on the base of this dish.

Condition The interior of the dish is covered with scratches and a small amount of corrosion. There is a greater amount of corrosion on the exterior of the dish.

Comment Part of a set with nos. 31, 33, 34.

Bibliography See Strong 1966 plate 41 B and Painter 2001 nos. M44-55 for examples of similar beading.

33. (Plate XXXI) *Small Oval Dish*

Roman, first century C.E.
Length 7.0, width 5.2; weight 42.
SAMA Acc. No. 86.138.33.

This small oval dish has a flat rim decorated with beading and sits on a low base ring. It is also decorated with an incised bird standing on a branch. The bird has a long train of feathers and plumage sticking up from the top of its head. There is also a turning hole indicative of manufacture on a lathe underneath the dish inside the footring.

Condition There is a small amount of corrosion on the interior of the dish. The exterior is covered with a uniform layer of corrosion.

Comment Part of a set with nos. 31, 32, 34.

Bibliography See Painter 2001, nos. M18-19 for a similar bird motif and for similar beading see Strong 1966, plate 41 B and Painter 2001, nos. M44-55.

34. (Plate XXXII) *Small Oval Dish*

Roman, first century C.E.
Length 7.0, width 5.2; weight 41.
SAMA Acc. No. 86.138.34.

This small oval dish has a flat rim decorated with beading and sits on a low base ring. It is also decorated with an incised bird standing on a branch. The bird has a long train of feathers and plumage sticking up from the top of its head. There is also a turning hole indicative of manufacture on a lathe underneath the dish inside the base ring.

Condition There is a small amount of corrosion on the interior of the dish. The exterior is covered with a uniform layer of corrosion.

Comment Part of a set with nos. 31-33.

Bibliography See Painter 2001, nos. M18-19 for a similar bird motif and for similar beading see Strong 1966, plate 41 B and Painter 2001, nos. M44-55.

35. (Plate XXXIII) *Oval Dish*

Roman, third-fifth Centuries C.E.
Max. Length 14.7, width 8.9; weight 181.
SAMA Acc. No. 86.138.35.

This shallow oval dish has a simple rim and sits on a low footring.

Inscription

L. 

(Plate XXXIII C) Dotted and scratched inscription inside the footring.

Condition The interior of the plate is covered with an even layer of corrosion and there is a moderate amount of corrosion on the exterior of the plate as well.

Bibliography For comparative inscriptions see Martin 1984 383, IN 10-12 and Mango 1994, 43, nos. 7, 8, 12, 16

36. (Plate XXXIV) *Small Shallow Bowl with Punched Decoration*

Achaemenid, Hellenistic or Roman, third–second century B.C.E. or second –third century CE.
Rim Diameter 5.3, Diameter base 4.7; weight 25.
SAMA Acc. No. 86.138.36.

This small bowl has a flat base curving up to a simple rim. The side of the bowl is decorated with 16 egg-shaped bosses. In between each boss are two small diamond-shape protrusions. The interior of the bowl has not been polished or finished. A turning hole and concentric burnishing lines on the base indicate this bowl was made on a lathe.

Condition Complete. There are a few small scratches and gouges on the base of the dish. There is also a series of handwritten numbers on the interior of the bowl. They are faded but could be a previous museum accession number.

Comment Pair with no. 37.

Bibliography See Strong 1966, Plate 25A and Bivar 1961 for a vessel with similar decoration.

37. (Plate XXXV) *Small Shallow Bowl with Punched Decoration*

Achaemenid, Hellenistic or Roman, third–second century B.C.E. or second –third century C.E.
Rim Diameter 5.3, Base Diameter 4.9; weight 26.
SAMA Acc. No. 86.138.37.

This small bowl has a flat base curving up to a simple rim. The side of the bowl is decorated with 15 egg-shaped bosses. In between each boss are two small diamond-shape protrusions. The interior of the bowl has not been polished or finished. A turning hole and concentric burnishing lines on the base indicate this bowl was made on a lathe. Seven small parallel lines are also scratched underneath the bowl.

Inscription

M. 

(Plate XXXV A) Scratched into interior of bowl, possibly graffito or incidental marks.

Condition There is one crack in the rim and the rim opposite this crack is bent. The exterior of the bowl is covered with a small amount of corrosion.

Comment Pair with no. 36.

Bibliography See Strong 1966, Plate 25A and Bivar 1961 for a vessel with similar decoration.

38a-b. (Plate XXXVIII) *ribbed bowl with Locking Lid*

Late Hellenistic or Roman republican, thirdfirst centuries B.C.E.
Diameter 5.3, height 4.6; weight 91.
SAMA Acc. No. 86.138.38 a-b

This small vessel has a round body and sits on a simple base. The rim is decorated with gilt beading and there is a band of gilded egg-shaped bosses just below it. There are two incised lines between each boss. Just below this band the vessel curves inward

and was left undecorated. There are elaborate gilded designs of various patterns (circles, guilloche) in separate bands on the shoulder. On the body, there are elongated tongues with raised edges and darts in between, also gilded. There is a turning hole indicative of manufacture on a lathe in the center of the base.

The lid is very thin and is decorated only with a concave moulding and engraved lines. There is a circular knob on the top of the lid, which moves a metal piece into place, thus locking the vessel.

Condition One of the egg-shaped bosses just below the rim is missing, leaving behind the hole over which it was fastened. Just below this, on the undecorated part of the vessel, are several scratches that could possibly be an inscription. The gilding on the upper parts of the vessel is fairly worn but it remains better preserved closer to the base of the vessel. There are several small spots of corrosion on the base of the vessel.

There are a couple of scratches on the top of the lid resembling the character X. These could be graffito or just incidental marks. There are also a few small spots of corrosion on the top of the lid. The underside of the lid is rough and has not been polished or finished. There is also a medium-sized circular area where the exposed silver was scraped away.

Bibliography For vessels with similar decoration see Oliver 1977, 40, no. 10, BM Registration No. 1926,0406.12 For more information on gilding see Lins and Oddy 1975 and Oddy 1981.

39. (XL) *Ladle*

Roman, first century B.C.E. – first century C.E.
Max. Length 14.5, Max. Diameter 5.2; weight 64.
SAMA Acc. No. 86.138.39.

This undecorated ladle has a deep bowl with a round bottom and a vertical handle with a rectangular cross-section.

Condition The handle of the ladle has been bent backwards about 90° next to where it meets the bowl. It was then bent again towards the end of the handle. The handle is tarnished and has lost its shine. The bowl is also dented.

Bibliography See Oliver 1977, 100, no. 58 for a similar ladle and Strong 1966, 115-116, 143-144 for information on the changes in shapes of ladles over time.

40a-b. (Plate XLI) *Spherical Vessel and Lid*

Roman or Byzantine, third–sixth centuries C.E.
Max. Diameter 7.2, Max. Diameter Rim 5.3, Max. height 6; weight 51.
SAMA Acc. Nos. 86.138.40, 86.130.1b.

This spherical vessel has a domed lid and sits on a very low footring. There is turning hole and concentric burnishing lines indicative of manufacture of on a lathe on the top of the lid. The body of the vessel is decorated with two bands of incised lines. There is also a turning hole and concentric burning lines on the base of the vessel.

Condition There is a small amount of corrosion on the exterior of the lid and the interior is heavily corroded and discolored. The vessel is dented in many places and does not stand up straight. The rim is not straight and there is at least significant sized tear in it.

Bibliography Mango 1986, 240, no. 70.

41. (Plate XLVII) *Ligula*

Roman, late first–second century C.E.
Length 16.5; weight 26.
SAMA Acc. No. 86.138.41

This spoon is a ligula, a standard Roman spoon type of the first century C.E. It has a pear-shaped bowl

linked to the handle by means of a downward curving arm set at an angle. The ovoid bowl is embellished with a convex moulding defined by a shallow groove around the inside. The handle is fluted and moulded with 2 bands of 3 circles and ends with a finial in the form of a cloven hoof.

Inscription



N.

(Plate XLII C) Dotted inscription in two rows at the join of the handle and the bowl on the right side.

Condition The silver is slightly tarnished but this spoon is otherwise in excellent condition.

Comment Part of a set with nos. 55 and 56.

Bibliography Strong 1966, 155-156, fig. 32c.
Hayes 1984, 5-6, nos. 5, 8.

42. (Plate XLIII) Cochlear

Roman, first century C.E.
Length 14.9; weight 35.
SAMA Acc. No. 86.138.42.

This ligula has a straight handle, cylindrical in section, terminating with a button, and an ovoid bowl with a flat rim linked to the handles by means of a downward curving arm set at an angle to the handle.

Inscription



O.

(Plate XLIII C) Dotted inscription on the exterior of the bowl to the left of the handle attachment.

Condition The silver is slightly tarnished but this spoon is otherwise in excellent condition.

Comment Part of a set with nos. 48, 49, 51, 54.

Bibliography Painter 2001, M65-7, fig. 7. Strong 1966, 155, fig. 32c.

43. (Plate XLV) Ligula

Roman, first century C.E.
Length 13.9; weight 14.
SAMA Acc. No. 86.138.43.

This ligula has a straight handle, rectangular in section, terminating with a cloven hoof, and an ovoid bowl linked to the handles by means of a downward curving arm set at an angle to the handle.

Condition This spoon is tarnished and the handle is slightly bent. The bowl is also dented in several places.

Bibliography Strong 1966, 155, fig. 32c.

45. (Plate XLVI) Ligula

Roman, first century C.E.
Length 14.0; weight 26.
SAMA Acc. No. 86.138.45.

This ligula has a straight handle, rectangular in section, terminating with a cloven hoof, and an ovoid bowl linked to the handles by means of a downward curving arm set at an angle to the handle.

Inscription



P.

(Plate XLVI C) Scratched inscription on the interior of the bowl, running away from the handle, very faint, not visible in photograph.

Condition This spoon is tarnished and the handle is slightly bent. The bowl is also dented in several places.

Bibliography Strong 1966, 155, fig. 32c.

47. (Plate XLVII) Cochlear

Roman, first century C.E.
Length 15.7, weight 20.
SAMA Acc. No. 86.138.47

This spoon is a cochlear, a standard Roman spoon type of the First Century C.E. It has a round, hemispherical bowl and a sharp-pointed handle attached directly to the bowl.

Condition The spoon is slightly tarnished but is in otherwise excellent condition.

Comment Part of a set with nos. 48-54.

Bibliography Strong 1966, 155, fig. 32c. Maiuri 1933, nos. 71-78, pl. LXI. Painter 2001, fig. 7, M71-78

48. (Plate XLVII) Cochlear

Roman, first century C.E.
Length 15.5; weight 23.
SAMA Acc. No. 86.138.48.

This cochlear has a round, hemispherical bowl and a sharp-pointed handle attached directly to the bowl. There are two parallel, incised lines running down the length of the handle.

Inscription

Q. 

(Plate XLVIII A) Dotted inscription on the exterior of the bowl.

Condition The spoon is slightly tarnished but is in otherwise excellent condition.

Comment Part of a set along with nos. 47, 49-54.

Bibliography Strong 1966, 155, fig. 32c. Maiuri 1933, nos. 71-78, pl. LXI. Painter 2001, fig. 7, M71-78.

49. (Plate XLVII) Cochlear

Roman, first century C.E.
Length 16.2; weight 25.
SAMA Acc. No. 86.138.49

This cochlear has a round, hemispherical bowl and a sharp-pointed handle attached directly to the bowl.

Inscription

R. 

(Plate XLVIII B) Dotted inscription on the exterior of the bowl.

Condition The spoon is slightly tarnished but is in otherwise excellent condition.

Comment Part of a set along with nos. 47, 48, 50-54.

Bibliography Strong 1966, 155, fig. 32c. Maiuri 1933, nos. 71-78, pl. LXI. Painter 2001, fig. 7, M71-78.

50. (Plate XLVII) Cochlear

Roman, first century C.E.
Length 15.5; weight 25 g.
SAMA Acc. No. 86.138.50.

This cochlear has a round, hemispherical bowl and a sharp-pointed handle attached directly to the bowl.

Condition The spoon is slightly tarnished but is in otherwise excellent condition.

Comment Part of a set along with nos. 47-49, 51-54.

Bibliography Strong 1966, 155, fig. 32c. Maiuri 1933, nos. 71-78, pl. LXI. Painter 2001, fig. 7, M71-78.

51. (Plate XLVII) Cochlear

Roman, first century C.E.
Length 16.2, weight 27.
SAMA Acc. No. 86.138.51.

This cochlear has a round, hemispherical bowl and a sharp-pointed handle attached directly to the bowl.

Inscription

S. 10V

(Plate XLVIII C) Dotted inscription on the exterior of the bowl.

Condition The spoon is slightly tarnished but is in otherwise excellent condition.

Comment Part of a set along with nos. 47-50, 52-54.

Bibliography Strong 1966, 155, fig. 32c. Maiuri 1933, nos. 71-78, pl. LXI. Painter 2001, fig. 7, M71-78.

52. (Plate XLVII) Cochlear

Roman, first century C.E.
Length 15.4, weight 25.
SAMA Acc. No. 86.138.52.

This cochlear has a round, hemispherical bowl and a sharp-pointed handle attached directly to the bowl. There are three rows of illegible characters scratched in the interior of the bowl (Plate XLVIII D).

Condition The spoon is slightly tarnished but is in otherwise excellent condition.

Comment Part of a set along with nos. 47-51, 53, 54.

Bibliography Strong 1966, 155, fig. 32c. Maiuri 1933, nos. 71-78, pl. LXI. Painter 2001, fig. 7, M71-78.

53. (Plate XLVII) Cochlear

Roman, first century C.E.
Length 13.2; weight 10.
SAMA Acc. No. 86.138.53/

This cochlear has a round, hemispherical bowl and a sharp-pointed handle attached directly to the bowl.

Condition The spoon is slightly tarnished but is in otherwise excellent condition.

Comment Part of a set along with nos. 47-52, 54.

Bibliography Strong 1966, 155, fig. 32c. Maiuri 1933, nos. 71-78, pl. LXI. Painter 2001, fig. 7, M71-78.

54. (Plate XLVII) Spoon

Roman, first century C.E.
Length 16.2; weight 27.
SAMA Acc. No. 86.138.51.

This cochlear has a round, hemispherical bowl and a short handle attached directly to the bowl. The handle is not pointed at the end but appears pinched.

Inscription

S. 10V

(Plate XLVIII D) Dotted inscription on the exterior of the bowl.

Condition The spoon is slightly tarnished but is in otherwise excellent condition.

Comment Part of a set along with nos. 47-53.

Bibliography Strong 1966, 155, fig. 32c. Maiuri 1933, nos. 71-78, pl. LXI. Painter 2001, fig. 7, M71-78.

55. (Plate XLIX) Spoon

Roman, late first-second century C.E.
Length 14.2; weight 11.
SAMA Acc. No. 86.138.55.

This hybrid cochlear/ligula type spoon has a lentoid bowl with a narrow rim and long plain pointed horizontal handle tapering slightly, projecting directly from the underside of the bowl at its pointed end. The rim of the bowl is slightly flattened.

Inscription

U. ANTIFONΟΥ

(Plate XLIX B) Dotted inscription on the back of the handle.

Condition The handle of this spoon is worn from use.

Comment Part of a set with nos. 41 and 56.

Bibliography Strong 1966, 177-178, fig. 36a, Hayes 1984, 6, no. 7. BM Registration Nos. 1850,0601.12, 1850,0601.13.

56. (Plate L) Spoon

Roman, late first-second century C.E.
Length 15.9; weight 13.
SAMA Acc. No. 86.138.56.

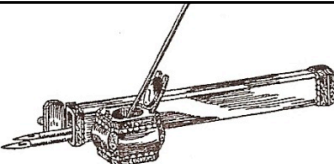
This hybrid cochlear/ligula type spoon has a lentoid bowl with a narrow rim and long plain pointed horizontal handle tapering slightly, projecting directly from the underside of the bowl at its pointed end. The rim of the bowl is slightly flattened.

Condition The handle of this spoon is worn from use.

Comment Part of a set with nos. 41 and 55.

Bibliography Strong 1966, 177-178, fig. 36a, Hayes 1984, 6, no. 7. BM Registration Nos. 1850,0601.12, 1850,0601.13.

Figure 1:



American Colony Stores
of Jerusalem
559 Madison Avenue
New York City

November 9th 1928.

#2750

Mrs. W. H. Stark,
Orange,
Texas.

1	Collection of ten bottles inlaid Egyptian and Sidonian period	1,500.00
1	Collection of Byzantine silver spoons and dishes	1,500.00
		<u>3,000.00</u>

(We are holding these until you wish
us to send them on to you).

*This is total amount in
reference to letter I sent you
Saturday.*

M. W. W. W.

12-7. 600.00
1-74 600.00
2-4 600.00
3-6 600.00
4-9. 600.00
5-6- 600.00
6-4 600.00
4200.00
7-4 600.00
8-5 480.00
600.00
5800.00

Figure 2:

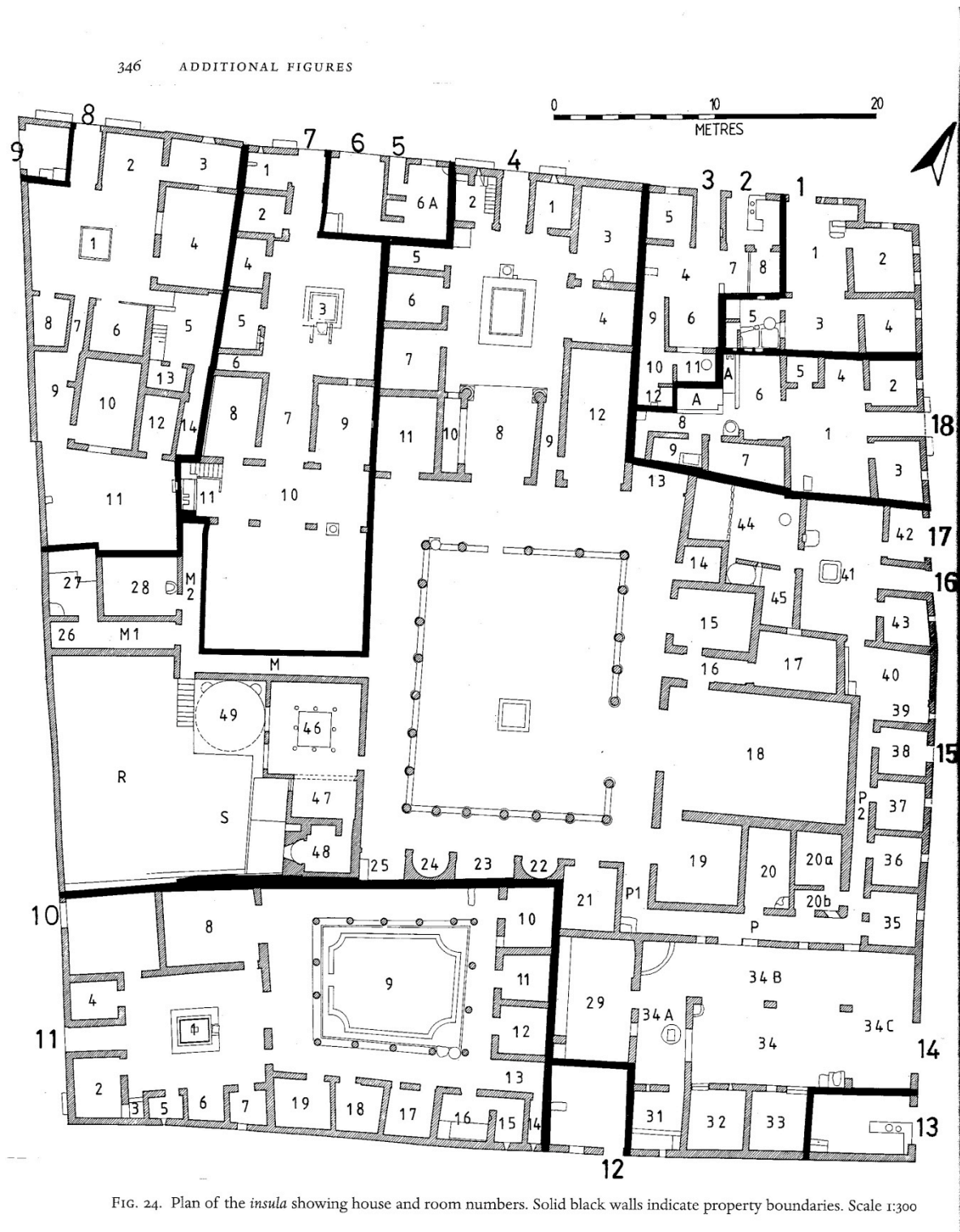


Figure 3:

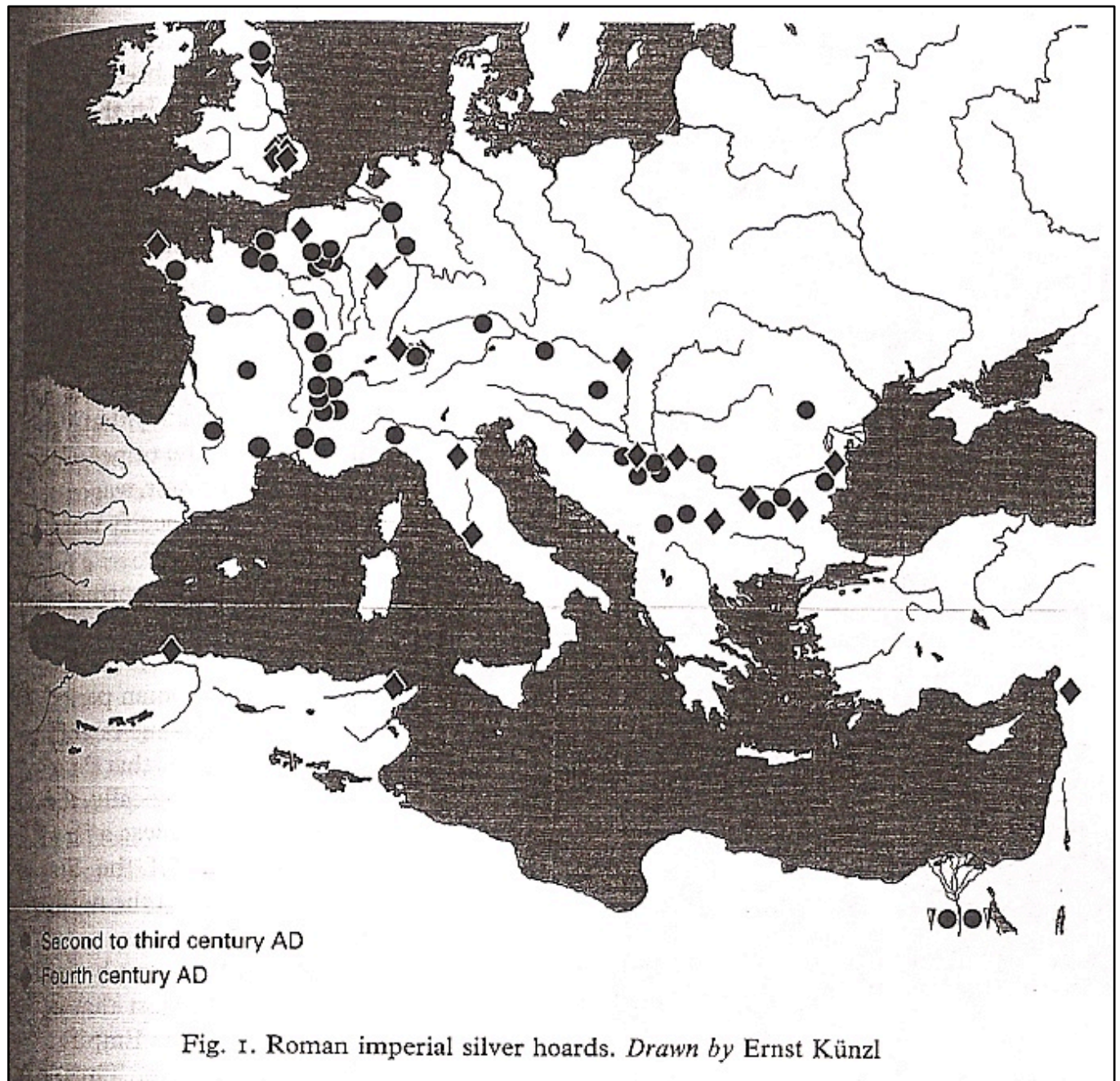


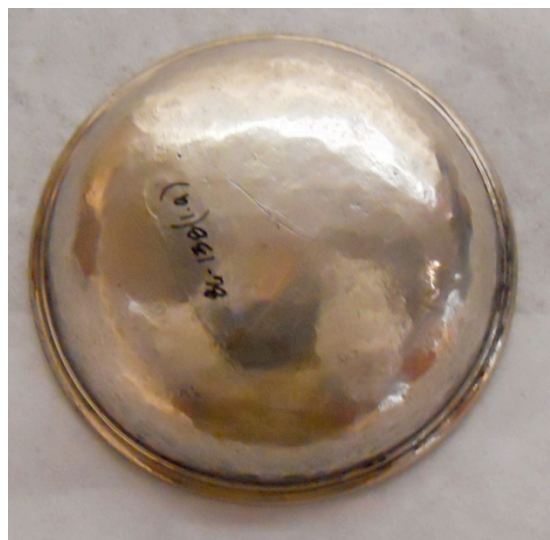
Figure 4: SAMA Stark-Willson Collection: Suggested Groupings.

	Single Objects	Pairs	Groups of three	Groups of four	Groups of eight	Groups of nine
Drinking Silver	ladle (39)					
Toilet Silver	shallow bowl and cover (1a-b) ribbed bowl with locking lid (38a-b) spherical vessel and lid (40a-b)					
Eating Silver	small bowl (15) oval dish (35) ligula (43)	Small shallow bowls (36,37)	small bowls (9-11) small bowls (12-14) ligula (41) cochlearia (55,56)	circular shallow dishes (19-21,25) circular shallow dish (31) small oval dishes (32-34)	pair of circular shallow dishes (17-18) set of 6 shallow circular dishes (3-8) small shallow dishes (22-24, 26-30)	ligula (42) cochlearia (47-54)

Plate I. Shallow Bowl (No. 1).
Third-sixth centuries C.E. Diameter 5.2. Weight 22.



A. Interior



B. Bottom

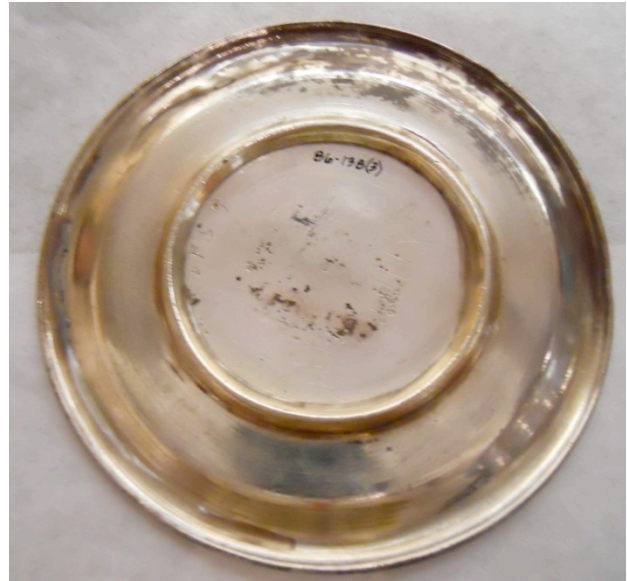


C. Exterior

Plate II. Shallow Circular Dish (No. 3).
First century C.E. Diameter 9.5. Weight 96.



A. Interior



B. Exterior



C. Inscriptions "TSS" and "ΑΙΙΙΙΑΝΟΥ" within the footring.

Plate III. Shallow Circular Dish (No. 4).
First century C.E. Diameter 9.7. Weight 112.



A. Interior



B. Exterior

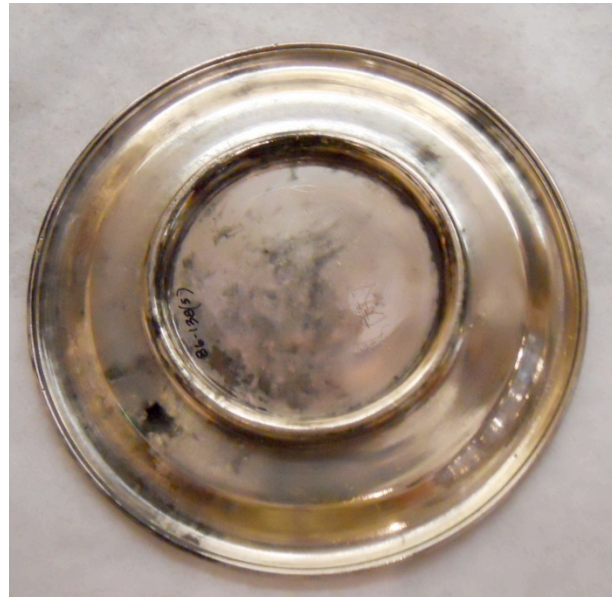


C. Inscription "ΑΠΙΙΑΝΟΥ" within the footring.

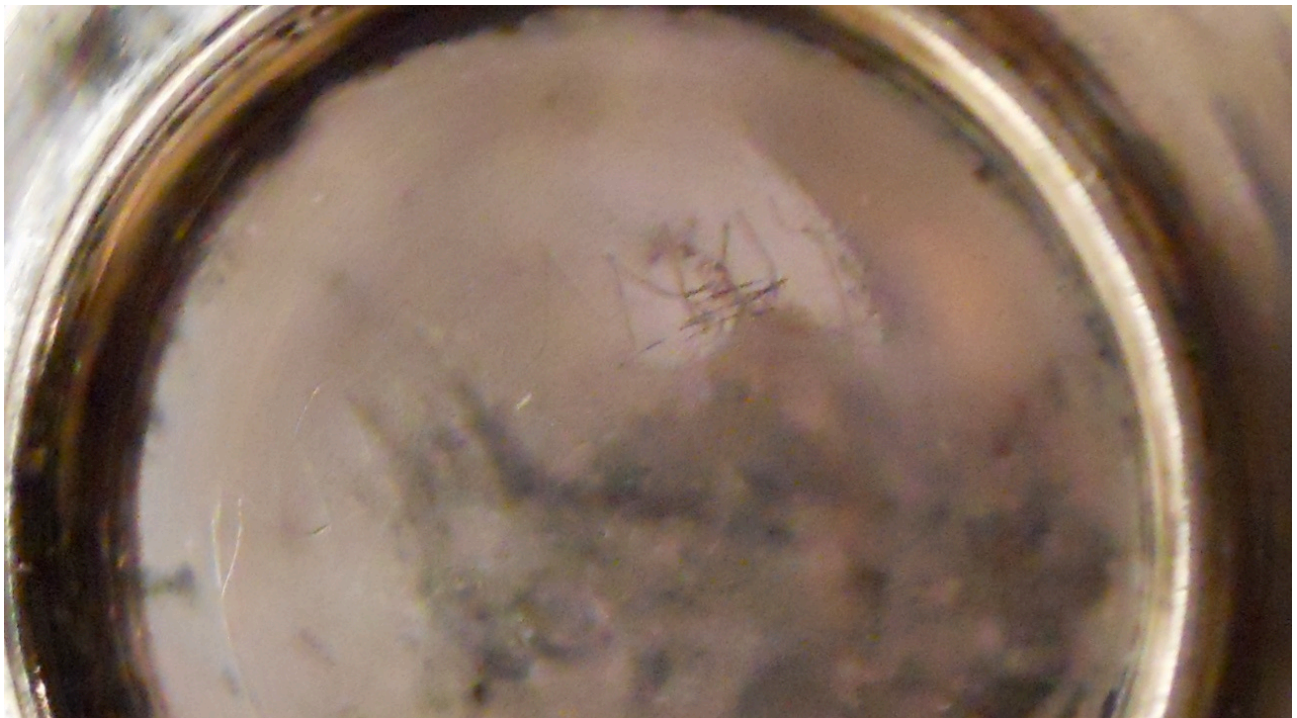
Plate IV. Shallow Circular Dish (No. 5).
First century C.E. Diameter 9.7. Weight 105.



A. Interior



B. Exterior



C. Inscription "ΑΙΙΙΙΑΝΟΥ" within the footring.

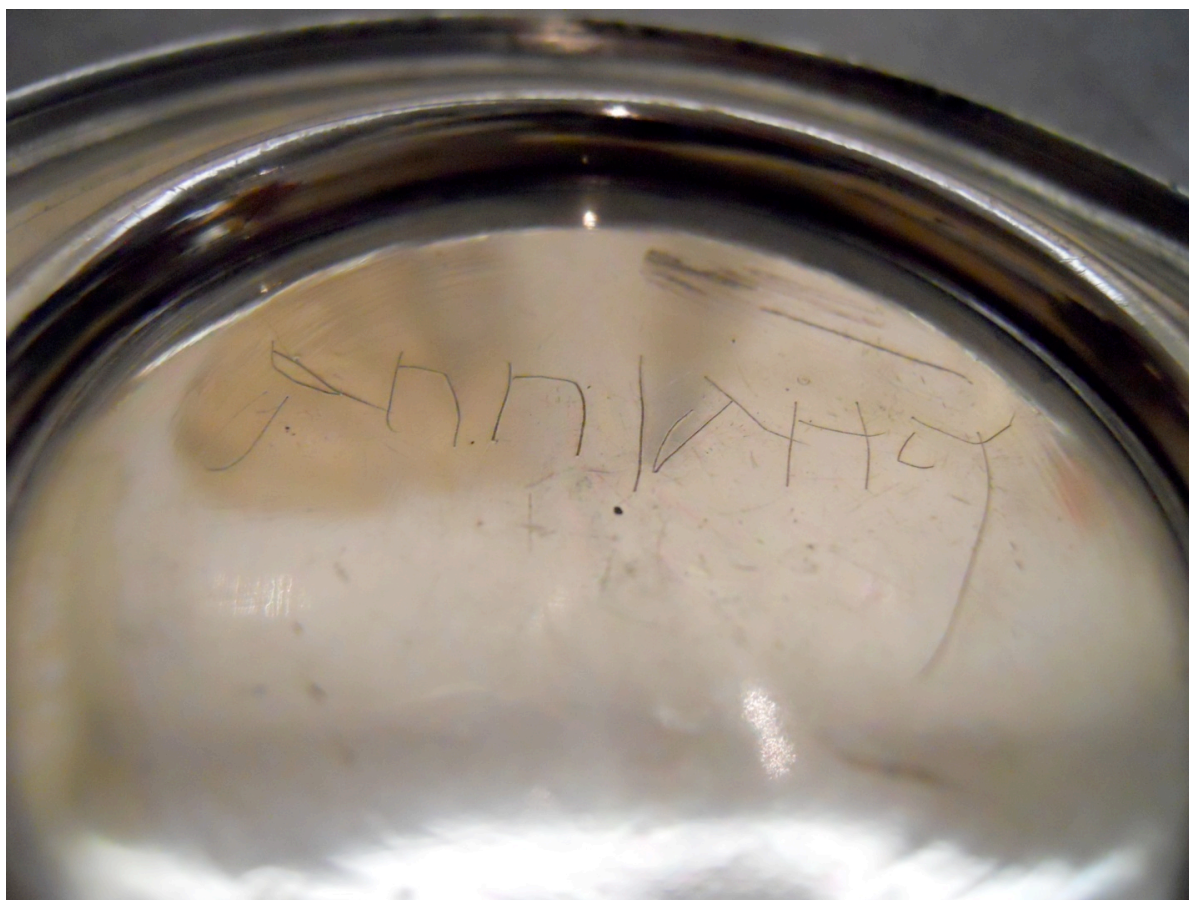
Plate V. Shallow Circular Dish (No. 6).
First century C.E. Diameter 9.5. Weight 102.



A. Interior



B. Exterior



C. Inscription "ΑΠΙΘΑΝΟΥ" within the footring.

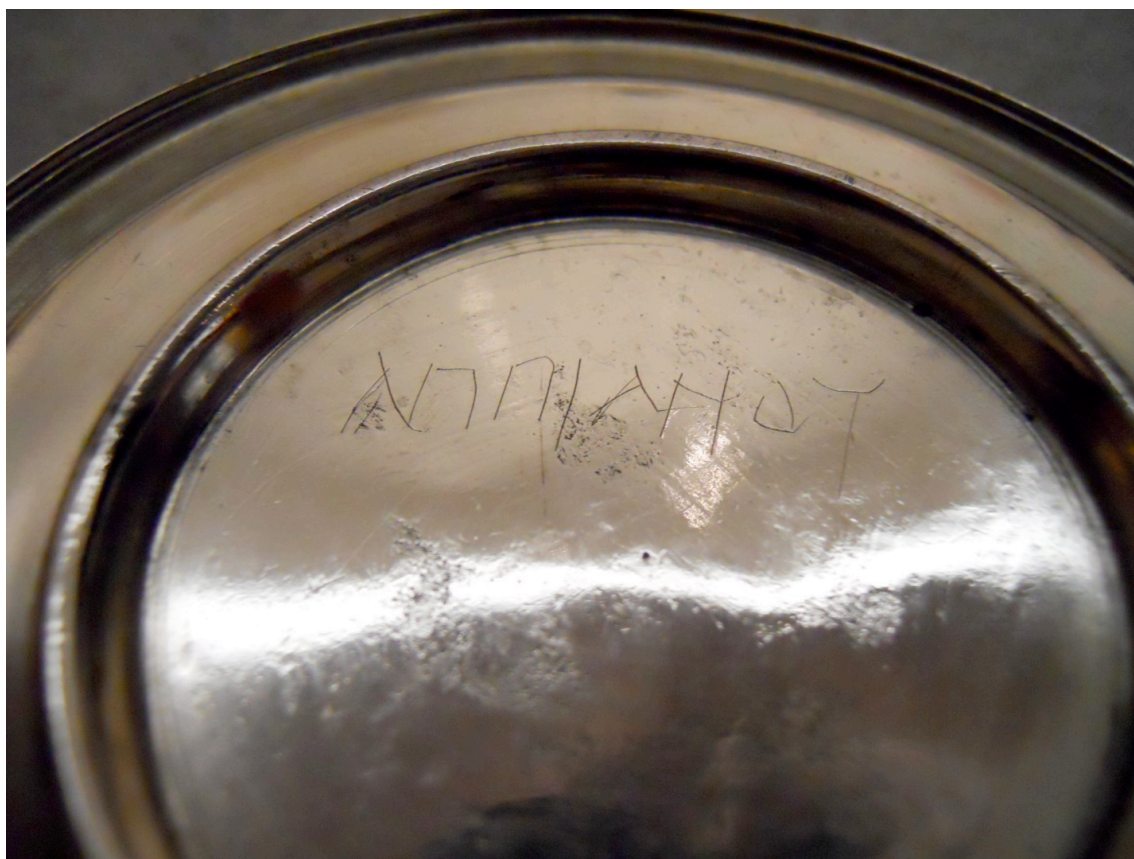
Plate VI. Shallow Circular Dish (No. 7).
First century C.E. Diameter 9.5. Weight 106.



A. Interior



B. Exterior



C. Inscription "ΑΠΙΙΑΝΟΥ" within the footring.

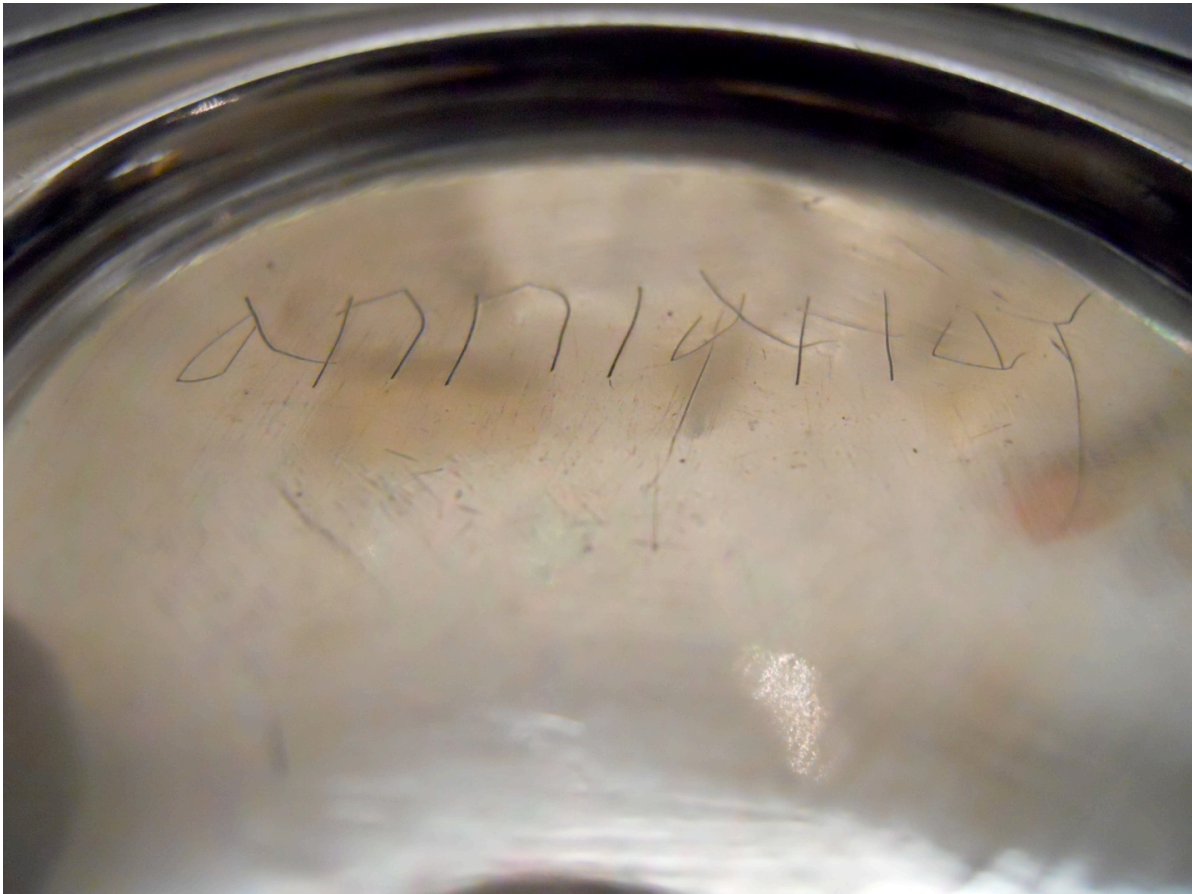
Plate VII. Shallow Circular Dish (No. 8).
First century C.E. Diameter 9.5. Weight 99.



A. Interior



B. Exterior



C. Inscription "ΑΠΙΙΑΝΟΥ" within the footring.

Plate VIII. Small Bowl (No. 9).
First century C.E. Diameter 7.1. Weight 68.



A. Interior



B. Exterior

Plate IX. Small Bowl (No. 10).
First century C.E. Diameter 7.2. Weight 70.



A. Interior



B. Exterior

Plate X. Small Bowl (No. 11).
First century C.E. Diameter 7.2. Weight 65.



A. Interior



B. Exterior

Plate XI. Small Bowl (No. 12).
First century C.E. Diameter 9.4. Weight 97.



A. Interior



B. Exterior

Plate XII. Small Bowl (No. 13).
First century C.E. Diameter 9.4. Weight 99.



A. Interior



B. Exterior



C. Graffito inscription within the footring.

Plate XIII. Small Bowl (No. 14).
First century C.E. Diameter 9.4. Weight 74.



A. Interior



B. Exterior

Plate XIV. Small Bowl (No. 15).
First century C.E. Diameter 12.3. Weight 135.



A. Interior



B. Exterior

Plate XV. Circular Shallow Dish (No. 17).
First century C.E. Diameter 11.2. Weight 114.



A. Interior



B. Exterior



C. Inscription "ΑΠΙΛΙΑΝΟΥ" within the footring.

Plate XVI. Circular Shallow Dish (No. 18).
First century C.E. Diameter 11.2. Weight 99.



A. Interior



B. Exterior



C. Inscription "ΑΠΙΛΙΑΝΟΥ" within the footring.

Plate XVII. Circular Shallow Dish (No. 19)
First century C.E. Diameter 7.4. Weight 64.



A. Interior



B. Exterior

Plate XVIII. Circular Shallow Dish (No. 20).
First century C.E. Diameter 7.4. Weight 62.



A. Interior



B. Exterior

Plate XIX. Circular Shallow Dish (No. 21).
First century C.E. Diameter 7.5. Weight 62.



A. Interior

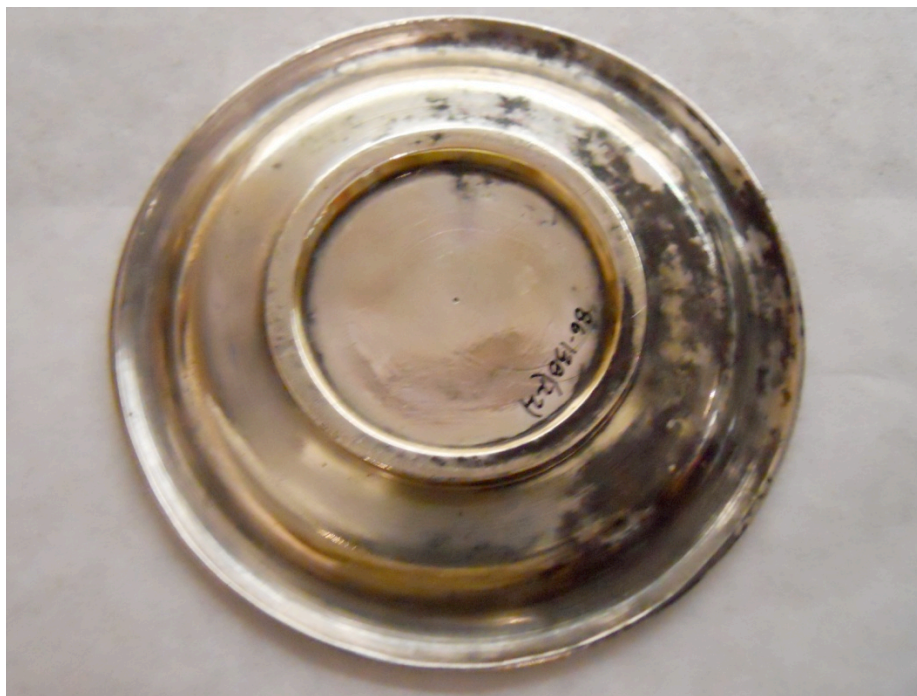


B. Exterior

Plate XX. Small Shallow Dish (No. 22).
First century C.E. Diameter 7.3. Weight 49.



A. Interior



B. Exterior

Plate XXI. Small Shallow Dish (No. 23).
First century C.E. Diameter 7.3. Weight 51.



A. Interior



B. Exterior

Plate XXII. Small Shallow Dish (No. 24).
First century C.E. Diameter 7.3. Weight 47.



A. Interior



B. Exterior

Plate XXIII. Small Shallow Dish (No. 25).
First century C.E. Diameter 7.4. Weight 63.



A. Interior



B. Exterior

Plate XXIV. Small Shallow Dish (No. 26).
First century C.E. Diameter 7.3. Weight 46.



Plate XXV. Small Shallow Dish (No. 27).
First century C.E. Diameter 7.4. Weight 45.



A. Interior



B. Exterior

Plate XXVI. Small Shallow Dish (No. 28).
First century C.E. Diameter 7.3. Weight 47.



A. Interior



B. Exterior

Plate XXVII. Small Shallow Dish (No. 29).
First century C.E. Diameter 7.3. Weight 50.



A. Interior



B. Exterior

Plate XXVIII. Small Shallow Dish (No. 30).
First century C.E. Diameter 7.5. Weight 49.



A. Interior



B. Exterior

Plate XXIX. Circular Shallow Dish (No. 31).
First century C.E. Diameter 6.1. Weight 29.



A. Interior



B. Exterior



C. Interior decoration.

Plate XXX. Small Oval Dish (No. 32).
First century C.E. Length 7.1. Weight 50.



A. Interior



B. Exterior

Plate XXXI. Small Oval Dish (No. 33).
First century C.E. Length 7.0. Weight 42.



A. Interior



B. Exterior

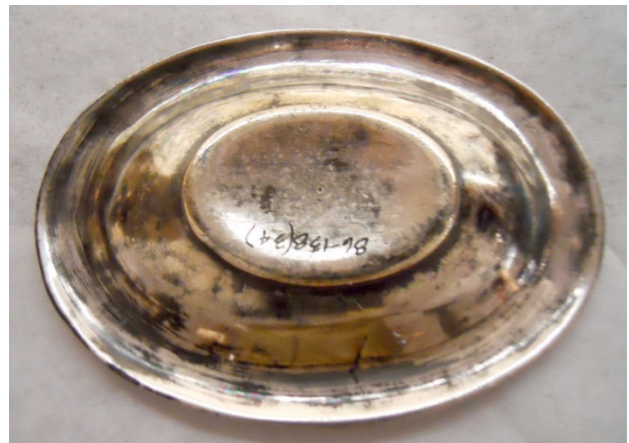


C. Interior decoration.

Plate XXXII. Small Oval Dish (No. 34).
First century C.E. Diameter Length 7.0. Weight 41.



A. Interior



B. Exterior



C. Interior decoration.

Plate XXXIII. Oval Dish (No. 35).
Third-fifth centuries C.E. Length 14.7. Weight 181.



A. Interior



B. Exterior



C. Weight inscription within the footring.

Plate XXXIV. Small Shallow Bowl with Punched Decoration (No. 36).

Third-second century B.C.E. or second -third century C.E.

Diameter 5.3. Weight 25.



A. Interior



B. Exterior



C. Exterior decoration.

Plate XXXV. Small Shallow Bow with Punched Decoration (No. 37).

Third-second century B.C.E. or second-third century C.E.

Diameter 5.3. Weight 26.



A. Interior



B. Exterior



C. Exterior decoration.

Plate XXXVI. Rosette *Phialē* with Aramaic Inscription.
Third-second century B.C.E. Diameter 14.2.



Plate XXXVII. Ribbed Bowl with Locking Lid (No. 38a-b).
Third-first century B.C.E. Diameter 5.3. Weight 91.



A. Top of lid.



B. Bottom of lid.



C. Exterior



D. Base.

Plate XXXVIII. Drinking Bowl.

Late fourth or early third century B.C.E. Diameter 9.8. Weight 164.8.



Plate XXXIX . Comparative Analysis of Gilding Techniques.



A. Non-Mercury Gilding
Statuette of Achaemenid King
Early fifth century B.C.E.
Height 14.8.



B. Unknown gilding technique.
Ribbed Vessel and Locking Lid (No. 38a-b)
Third-first century B.C.E.
Diameter 4.8.



C. Mercury Gilding
Dish decorated with a figure of Hermes
Third century C.E. Chaource Treasure.
Diameter 23.4.

Plate XL. Ladle (No. 39).

First century B.C.E.–first century C.E. Length 14.2. Weight 64.



A. Interior



B. Exterior

Plate XLI. Spherical Vessel and Lid (No. 40a-b).
Third–sixth centuries C.E. Diameter 5.3. Weight 51.



A. Exterior of lid.



B. Interior of lid.



C. Exterior.



D. Interior

Plate XLII. *Ligula* (No. 41).

Late first–early second century C.E. Length 16.5. Weight 26.



A. Interior



B. Exterior



C. Inscription "ANTIFONOI" at the join of the handle.

Plate XLIII. *Ligula* (No. 42).
First century C.E. Length 14.9. Weight 35.



A. Interior.



B. Exterior



C. Inscription "IOV" on the back of the bowl.

Plate XLIV. *Ligulae* from the House of the Menander.
First century C.E. Lengths 14.2-15.2. Weights 40-45.



Plate XLV. *Ligula* (No. 43).
First century C.E. Length 13.9. Weight 14.



A. Interior.



B. Exterior.

Plate XLVI. *Ligula* (No. 45).
First century C.E. Length 14.0. Weight 26.



A. Interior.

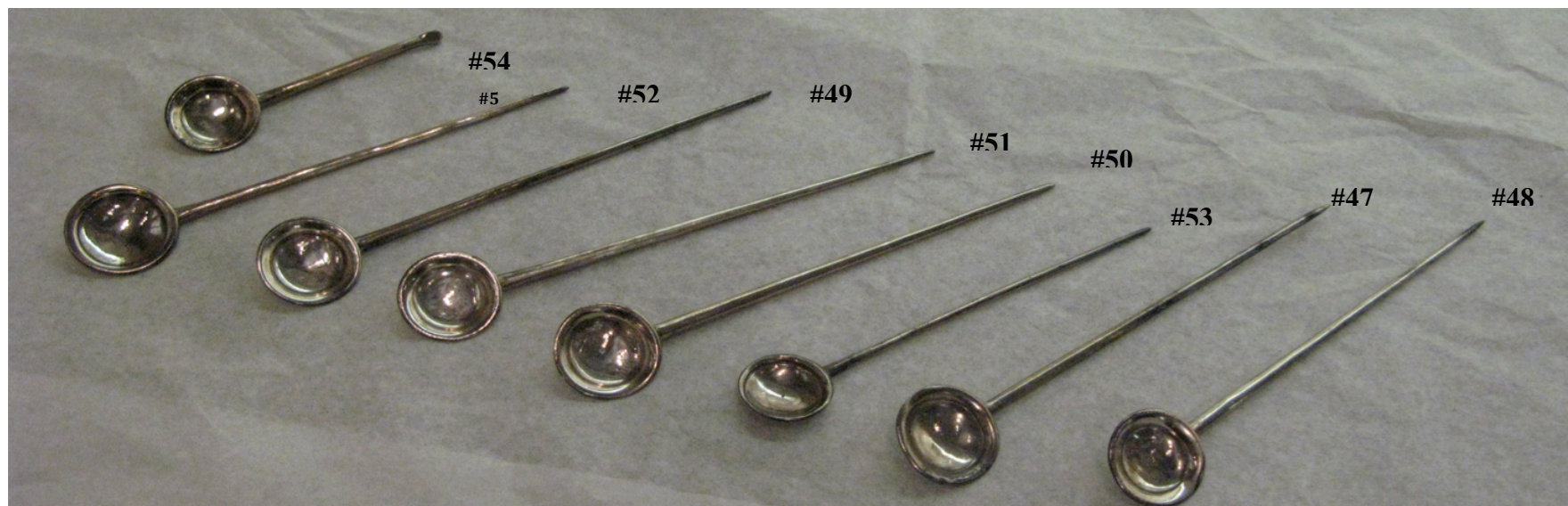


B. Exterior

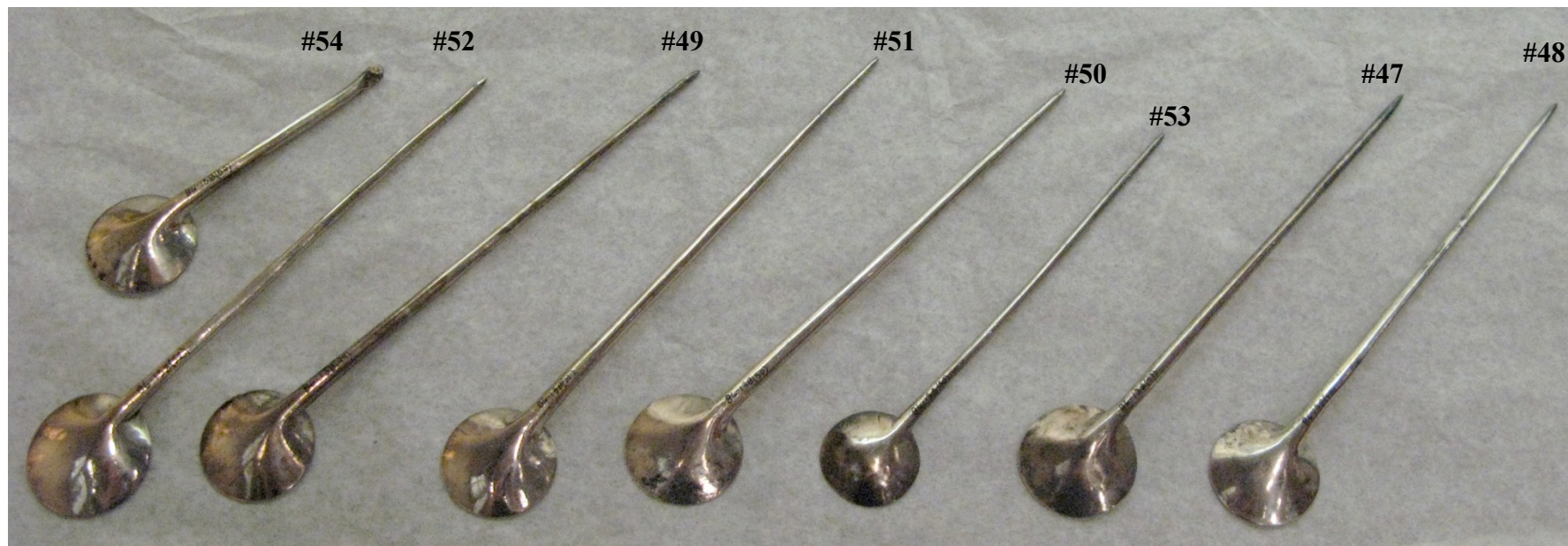


C. Illegible inscription within the bowl.

Plate XLVII. *Cochlearia*. (Nos. 47-54) First century C.E. Lengths 13.2-16.2. Weights 10-27.



A. Interior of *cochlearia* Nos. 47-54.



B. Exterior of *cochlearia* Nos. 47-54.

**Plate XLVIII. Inscriptions on *Cochlearia* (Nos. 48, 49, 51, 54).
First century C.E.**



A. Cochlear 48 with inscription "IOV."



B. Cochlear 49 with inscription "IOV."



C. Cochlear 51 with inscription "IOV."



D. Cochlear 52 with illegible inscription in bowl.



E. Cochlear 54 with the inscription "IOV."

Plate XLIX. Cochlear (No. 55).
First-second century C.E. Length 14.2. Weight 11.

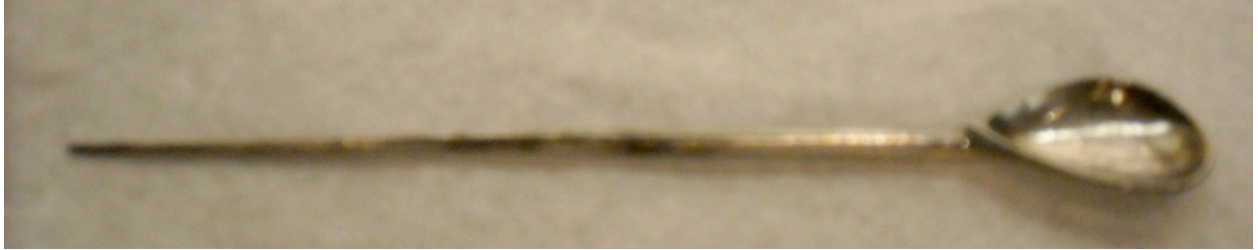


A. Exterior.

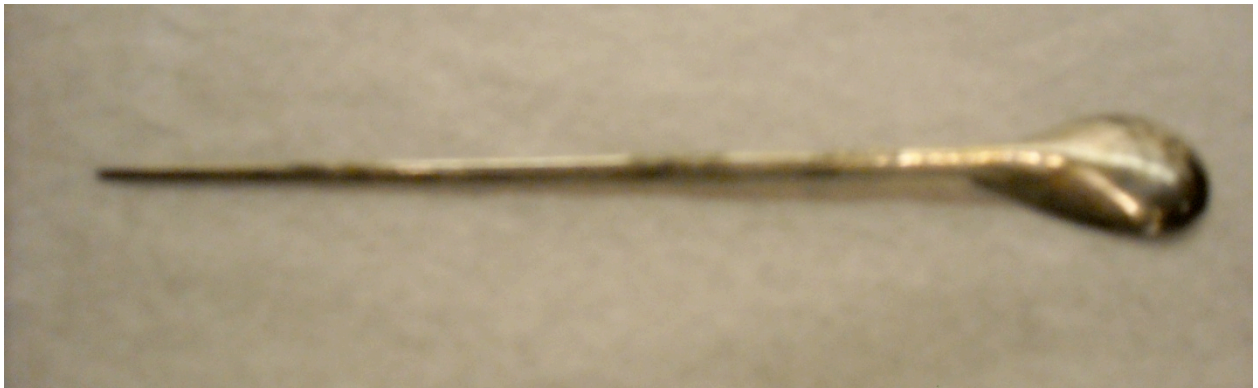


B. Inscription "ANTIFONON" on the back of the bowl.

Plate L. Cochlear (No. 56).
First-second century C.E. Length 15.9. Weight 13.



A. Interior



B. Exterior.

Plate LI. Backworth Hoard.
Second century C.E. Spoon lengths 12.4

